



SOUTH AUSTRALIAN ECONOMIC INDICATORS

EMBARGO: 11:30AM (CANBERRA TIME) FRI 4 SEPT 1998

CONTENTS

	<i>page</i>
Notes	2
 REVIEW	
South Australian overview	3
State accounts	3
International accounts	5
Consumption and investment	6
Production	8
Prices	10
Labour force and demography	13
Incomes	16
Financial markets	17
Forward outlook	20
 TABLES	
List of tables	23
 ADDITIONAL INFORMATION	
Publications source index	47

- For further information about these and related statistics, contact Mark Parham on Adelaide 08 8237 7645, or any ABS office shown on the back cover of this publication.

NOTES

FORTHCOMING ISSUES

<i>ISSUE</i>	<i>RELEASE DATE</i>
October 1998	1 October 1998
November 1998	2 November 1998
December 1998	2 December 1998

ABOUT THIS PUBLICATION

South Australian Economic Indicators is a monthly publication which contains the latest available data at the time of preparation for a range of statistical series that have been identified as indicators of economic activity in this State. In a number of cases the figures presented are preliminary and subject to revision in subsequent issues.

CHANGES IN THIS ISSUE

There are no changes in this issue.

SYMBOLS AND OTHER USAGES

n.a.	not available
n.y.a.	not yet available
*	subject to sampling variability too high for most practical purposes
..	not applicable
0, 0.0	nil or rounded to zero

ROUNDING

Where figures have been rounded, discrepancies may occur between sums of the component items and totals.

INFORMATION

More detailed information on each series, including explanatory and technical notes, can be obtained from other Australian Bureau of Statistics publications or alternative data sources. To assist those seeking further information a source publication for each of the series has been documented in the statistical summary.

P. M. Gardner
Regional Director
South Australia

REVIEW

SOUTH AUSTRALIAN OVERVIEW

- The value of merchandise exports, where the final stage of production was in South Australia decreased from \$441.3m in May 1998 to \$412.4m in June 1998 whilst the value of merchandise imports released from Customs control in South Australia was \$315.2m, an increase of 1.1% .
- The trend estimate for monthly retail turnover continues to increase, rising by 0.6% in June 1998.
- The trend estimate for new motor vehicle registrations increased 2.8% in June 1998 and continues the growth of recent months driven particularly by passenger vehicles.
- The value of new residential building approved has risen 26.7% to \$70.0m while alterations and additions to residential buildings rose by 12.0% for June 1998.
- In June 1998 there were 3,647 short-term overseas visitor arrivals and 13,367 short-term resident departures.
- The trend estimate of employed persons in June 1998 was 3.8% lower than the level of one year ago.
- The trend unemployment rate has risen gradually over the past 12 months; up from 9.7% in July 1997 to 10.1% in July 1998.
- The trend estimate of average weekly ordinary time earnings of full-time adult employees fell 0.5% from February 1998 to May 1998.
- In May 1998 a total of 1,800 working days were lost through industrial disputation.
- Total new housing finance commitments (original figures including alterations and additions) increased 19.3% to \$322.0m in June 1998, 21.4% above the previous June.

STATE ACCOUNTS

NOTE: The ABS no longer compiles quarterly State Account estimates. However, some of the information previously included in *Australian National Accounts: State Accounts* (Cat.no. 5242.0) is now provided in a new Standard Data Service entitled *Australian National Accounts: Quarterly State Details* (Cat. no. 5206.0.40.001). This information will be available quarterly, usually within one week of the release of the quarterly Australian National Accounts.

Trend (Constant prices)

State final demand (SFD) increased by 0.5% in the March quarter 1998 with the rate of increase slowing for the second consecutive quarter from the peak of 1.8% in the September quarter 1997. SFD is following the national trend which has slowed for the third consecutive quarter, down from the peak of 1.6% in the June quarter 1997 to 0.7% in the March quarter.

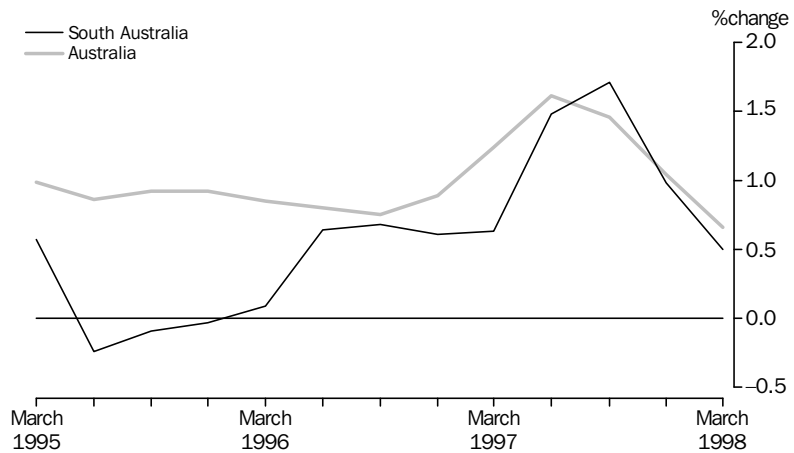
Growth through the year to March quarter 1998 was 4.9%, approximately the same as the national rate of 4.8%.

Contributing to the slowing in the growth of SFD was a fall in public sector final demand of -3.2% in the March quarter and a decline in the growth rate of private gross fixed capital expenditure to 2.6%.

Trend (Constant prices) *continued*

Private final consumption expenditure rose 1.2% (the national rate was 0.8%). Growth through the year to March quarter was 5.2%, slightly higher than the national rate of 4.6%. South Australia has been marginally ahead of the national rate for the past three quarters.

State final demand: **Trend** (Constant prices)(a)



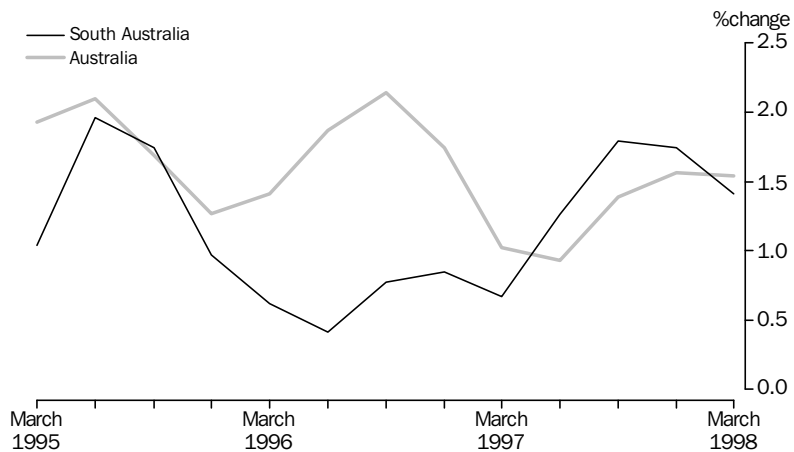
(a) Quarterly changes

Trend (Current prices)

Wages, salaries and supplements grew by 1.4% in the March quarter and has, for past two quarters, grown at approximately the same rate as the national rate.

Growth through the year to the March quarter was 6.3% compared with the national rate of 5.5%.

Wages, salaries and supplements: **Trend** (Current prices)(a)



(a) Quarterly changes

INTERNATIONAL ACCOUNTS

Merchandise exports

The value of merchandise exports, where the final stage of production was in South Australia decreased from \$441.3m in May 1998 to \$412.4m in June 1998. While this was a decrease of 6.6% on May 1998 it was a 2.3% increase on June 1997. Decreases occurred in meat, wine, wool and sheepskins, machinery, road vehicles and petroleum. Increases occurred in cereals, metals and fish.

For 1997–98 annual exports were \$4,983.5m just 0.6% less than the previous year. Increases were recorded in meat (\$35.5m), wine (\$165.8m), wool and sheepskins (\$25.5m), machinery \$22.7m), metals (\$32.0m), and fish (\$44.8m) but larger offsetting decreases were recorded for cereals (\$217.5m), road vehicles (\$176.6m) and petroleum (\$48.5m).

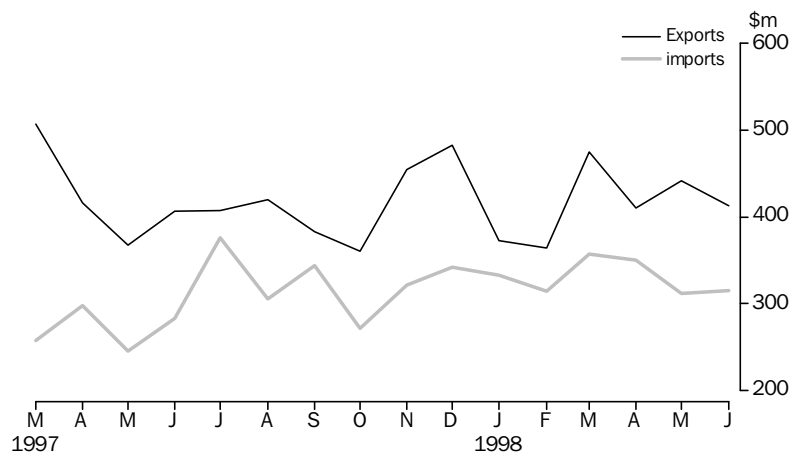
The major changes in values to destinations of South Australian exports for 1997–98 were increases to the United Kingdom (\$119.3m), China (\$86.1m) and decreases to the United States (\$76.2m), Middle East (\$164.4m) and New Zealand (\$27.5m).

Merchandise imports

The value of merchandise imports released from Customs control in South Australia was \$315.2m in June 1998, an increase of 1.1% on May and a 11.3% increase on June 1997.

For 1997–98 annual imports were \$3,942.5m an increase of (\$529.5m) 15.5% on the previous year. The largest increases were in machinery (\$193.7m) and road vehicles (\$233.9m).

Merchandise exports and imports



CONSUMPTION AND INVESTMENT

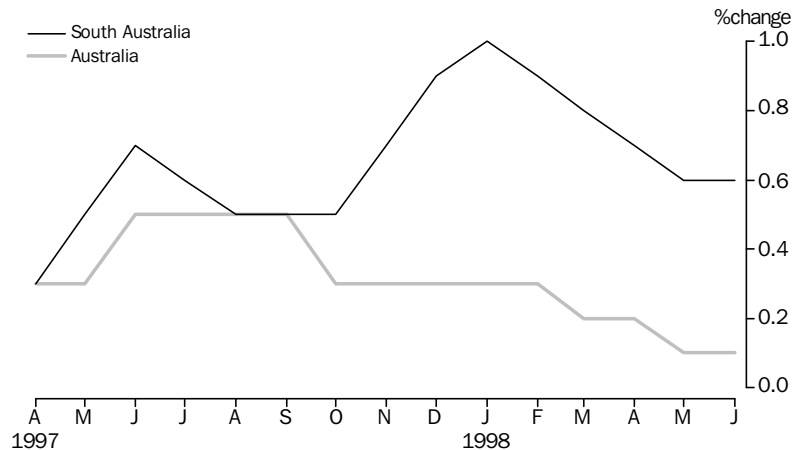
Retail turnover

The trend estimate continues to increase, rising by 0.6% in June 1998. Increases were recorded in groups food retailing, clothing and soft goods, recreational goods, other retailing and hospitality and services while department stores, and household good retailing continue to trend downwards.

Over the three months to June 1998 trend increases were recorded in the groups of food retailing (1.5%), clothing and soft goods (4.8%), recreational goods (3.2%), other retailing (1.7%) and hospitality and services (10.5%). Trend decreases were recorded for department stores (7.1%), and household good retailing (2.1%).

For 1997–98 in original terms turnover of retail establishments increased 6.3% to \$10,051.4m. Food retailing increased 9.6% to \$4,454m, clothing and soft goods increased 15.8% to \$541.0m, household good retailing increased 15.7% to \$1084.2m and other retailing increased 17.1% to \$928.2m. Department stores decreased 4.2% to \$1,073.7m, recreational good retailing decreased 2.7% to \$413.3m and hospitality and services decreased 8.8% to \$1,502.7m.

Retail turnover **Trend**



New motor vehicle registrations

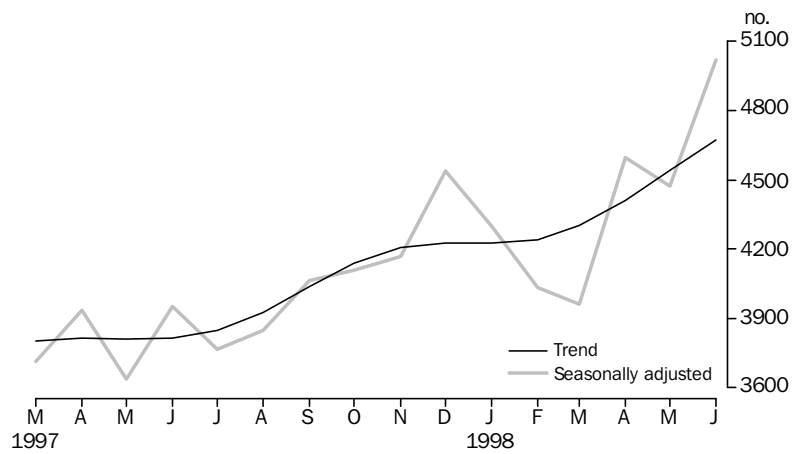
The trend estimate for new motor vehicle registrations increased 2.8% in June 1998 and continues the growth of recent months driven particularly by passenger vehicles.

In original numbers there were 5,761 vehicles registered during June 1998. The leading makes of passenger vehicles registered were Holden (864), Toyota (772), Mitsubishi (768), Ford (735), Hyundai (654), Nissan (176), Honda (84).

For 1997–98 in original numbers a record 50,860 vehicles including 43,407 passenger vehicles were registered, increases of 18.0% and 20.1% respectively.

Total Australian new motor vehicle registrations in original numbers in June 1998 were 18.5% higher than a year ago.

New motor vehicle registrations

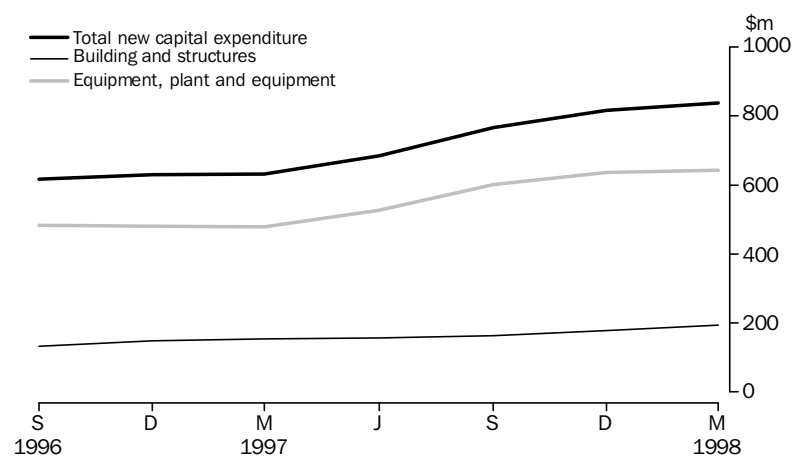


Private new capital expenditure

The trend estimate at current prices for private new capital expenditure for the March quarter 1998 increased 2.7% from the previous quarter. Expenditure on both buildings and equipment increased, up 8.4% and 1.1% respectively. Since March quarter 1997, total expenditure has increased by \$205m (32.4%). Expenditure on buildings has increased by \$40m (26.0%), and equipment has increased by \$165m (34.4%).

In original terms, private new capital expenditure for the March quarter 1998 was \$721m, a decrease of 24.3% on the previous quarter but a 38.4% increase on the March quarter 1997. Equipment, plant and machinery accounted for \$534m and buildings and structures \$188m.

Private new capital expenditure, type of asset: **Trend**



Tourist accommodation

The number of rooms and units available in licensed hotels, motels, guesthouses and serviced apartments with 15 or more rooms or units increased 0.2% in the March quarter 1998 compared with the March quarter 1997. The room occupancy rate increased from 57.1% to 59.2%. Takings for all accommodation types increased when compared with March quarter 1997, with total takings increasing from \$40.5m to \$44.0m. Average takings per room night occupied rose from \$81.20 to \$85.10.

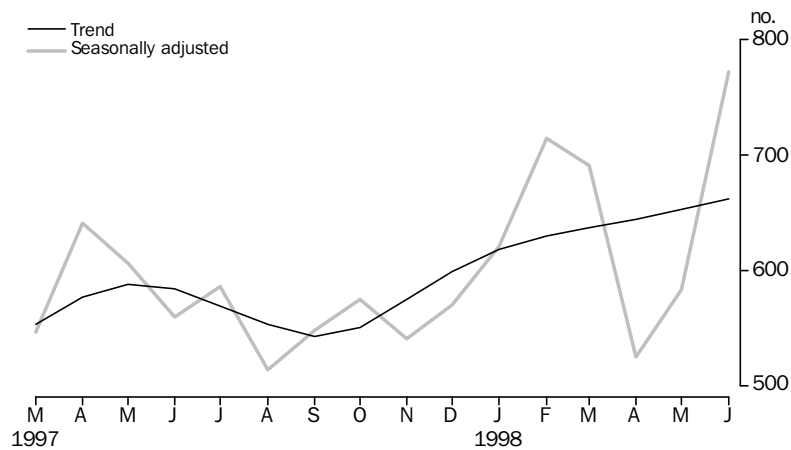
PRODUCTION

Building approvals

The trend for total dwelling units approved increased by 1.4% in June to be 13.4% higher than at the same time last year. In original terms, the number of dwelling unit approvals for June was 810, with private sector houses accounting for 610 and private sector other dwelling units 161, the highest level in three and half years. For the 1997–98 financial year 7,215 dwelling units were approved, 15.2% higher than the previous financial year.

For Australia, the trend for total dwelling units continues to grow, and is now 17.7% higher than last year. In original terms, South Australia accounted for 5.5% of the total dwelling units approved in Australia during June 1998. For 1997–98 South Australia accounted for 4.6% of dwelling units approved in Australia.

Dwelling units approved



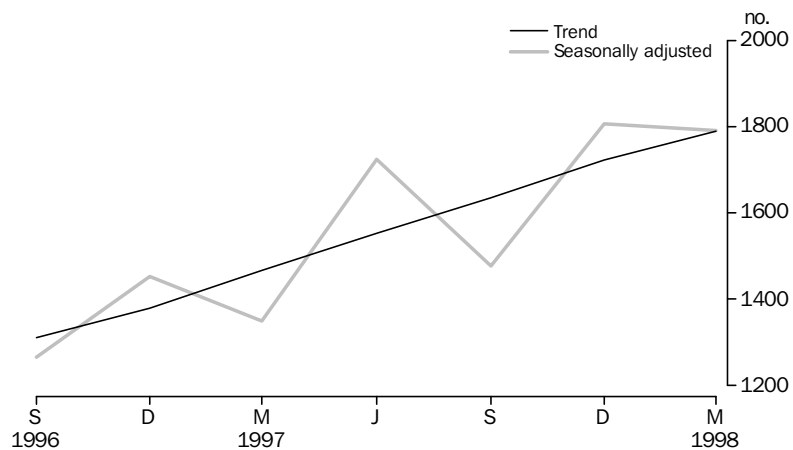
The value of new residential building approved has risen 26.7% to \$70.0m while alterations and additions to residential buildings rose by 12.0% for June 1998. The value of non-residential building approved in South Australia for June has fallen to \$36.5m. Of this total, the Educational category accounted for over 50% of this value.

Overall for June 1998, the value of all buildings approved rose by 13.8% to \$116.8m from the previous month. For 1997–98, the value of all building approved was \$1,360.1m, 12.1% more than the previous financial year.

Building activity

For the March quarter 1998, the trend for the total number of dwelling units commenced in South Australia rose by 3.9% and was 22.0% above the level of a year earlier. Corresponding figures for Australia were 3.8% and 15.7%. In original terms, 1,653 dwellings were commenced in the State during the March quarter, a decrease of 253 or 13.3% from the previous quarter. The March quarter level represents 4.8% of all dwelling units commenced in Australia.

Dwelling units commenced



The total value of building work commenced during the March quarter 1998 fell by 27.4% to \$281.3m. Both the value of new residential building and non-residential building recorded decreases of 16.4% and 47.1% respectively.

The total value of building work done during the March quarter 1998 fell by 16.3% to \$327.2m compared with a 9.8% decrease nationally. However, compared with the March quarter 1997, South Australia recorded a 13.1% increase in total building work done while the increase nationally was 9.7%.

The total value of building work yet to be done at the end of March 1998 was \$300.3m. This was a decrease of 10.3% on the figure for December 1997 and only accounted for 2.4% of the corresponding national figure.

Value of building activity



Engineering construction

The value of engineering construction work done for the March quarter 1998 rose by 1.2% to \$302.8m compared with a national increase of 5.3%. The March quarter level represents 6.9% of the national figure, compared with 7.2% for the December quarter. In South Australia, work commenced during the March quarter rose by 2.9% to \$213.2m, compared with a national fall of 0.4%. As a result, the State's proportion of the national total of commencements rose slightly to 5.3% for the March quarter 1998. Roads, highways, subdivisions and water storage and supply categories contributed to almost half (\$102.2m) of the value of work commenced for this period.

PRICES

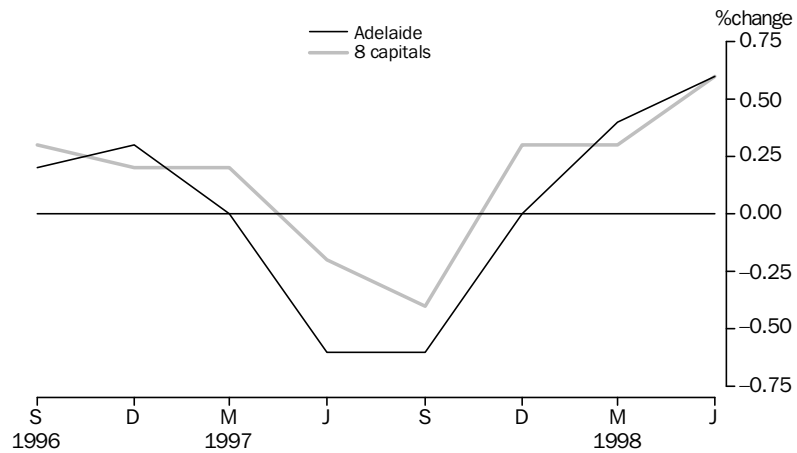
Consumer Price Index

The Consumer Price Index (all groups) in Adelaide rose 0.6% between the March quarter 1998 and June quarter 1998. The groups which contributed most to the overall increase this quarter were health and personal care, and food. All groups contributed to this quarter's increase except tobacco and alcohol which contributed a small decrease.

In annual terms, the index has shown a 0.4% increase between June 1997 and June 1998.

The Consumer Price Index for the weighted average of eight capital cities rose 0.6% from the previous quarter and rose 0.7% compared with last year.

Consumer price index

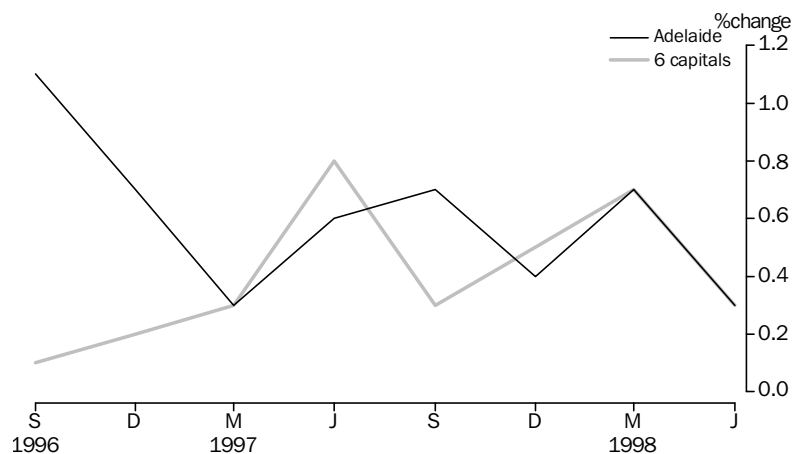


House building materials index

The Price Index of Materials used in House Building rose by 0.3% for the June quarter 1998 in Adelaide. Increases in the price of aluminium windows and doors and insulation were the main contributors to the rise, being partly offset with decreases in structural timber. The weighted average of the six State capitals recorded a 0.3% increase in the same period.

Adelaide recorded a rise of 2.1% in the Index for the 12 months to June quarter, with the weighted average of the six State capitals recording a 1.7% increase.

Materials used in house building

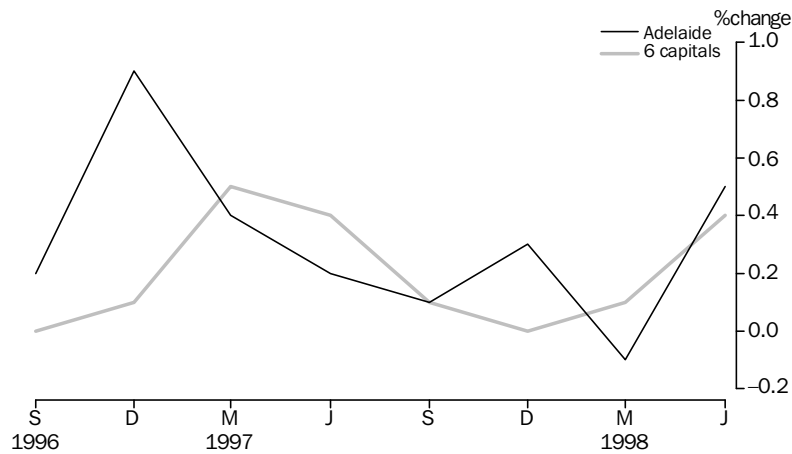


Non-house building materials index

The Price Index of Materials used in Building other than House Building rose 0.5% in the June quarter. Materials to record increases were aluminium windows, re-inforcing steel bar, fabric and mesh, and paint and other coatings while small decreases were recorded for clay bricks and non-ferrous pipes and fittings. For the same period, the weighted average of the six State capitals rose 0.4%.

For the 12 months to June quarter 1998, Adelaide recorded a rise of 0.8% in the Index, while the weighted average of the six State capitals showed a 0.5% increase in the same period.

Materials used in building other than house building



House prices indexes

During the March quarter 1998 the Price Index of Established Houses in Adelaide rose by 2.9%, while over the year to the March quarter the index increased 4.3%. Over the corresponding period, the weighted average of the eight capital cities index increased 2.5% and 7.7% respectively.

The Project Home Price Index increased by 1.1% during the March quarter 1998 and 5.6% when compared with the same time the previous year. Nationally, the weighted average of eight capital cities index rose 0.4% from the December quarter and 1.1% from the March quarter 1997.

Passenger transport cost index

The Passenger Transport Cost Index measures changes in the costs of operating a public transport passenger bus service in Adelaide. Costs covered include labour costs, leasing charges, registration and insurance, repairs and maintenance, fuel and overheads. The index has been compiled on a quarterly basis from September 1995 with a base of 100.0 in 1993–94. The All Groups index number for June quarter 1998 is 109.8, down from 110.5 in the previous quarter. This fall is due to decreases in the prices of distillate and depot leasing charges.

LABOUR FORCE AND DEMOGRAPHY

Population

At 31 December 1997 the estimated resident population of South Australia was 1,482,869. This was an increase of 1,271 persons from the September quarter and was due to a natural increase of 1,544 persons partly offset by net migration loss of 273 persons.

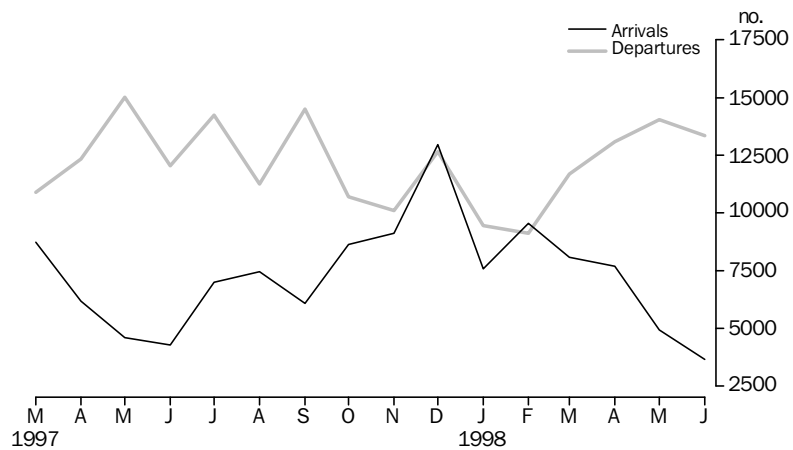
Short-term overseas visitor arrivals

In June 1998 there were 3,647 short-term overseas visitor arrivals to South Australia, a decrease of 26.1% on the previous month. A comparison with the same period last year shows a fall of 14.6%. For the financial year ended June 1998 there were 92,723 visitor arrivals to South Australia, an increase of 9.4% on the previous year. The South Australian proportion of short-term visitors was 1.2% for June 1998 and 2.2% for the year.

Short-term resident departures

There were 13,367 short-term resident departures in June 1998. This represents a decrease of 4.8% from last month and a 10.9% increase on last year. For the year ended June 1998 there were 144,178 resident departures an increase of 6.9% on last year. South Australia accounted for 4.7% of all short-term resident departures in June and 4.8% for the year.

Short-term arrivals and departures

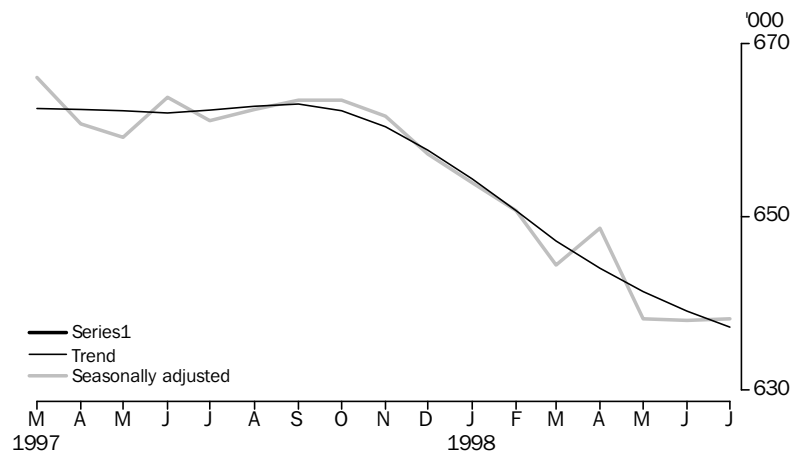


Employment

The trend estimate of employed persons in South Australia was 637,300 in July 1998, or 3.8% lower than the level of one year ago (662,300). Most of this decrease can be attributed to a decline in female employment of 17,700. In particular, part-time employment for females fell by 9.4% in the 12 months to July 1998.

The trend estimate of full-time employment in South Australia continues to fall. The July 1998 level of 462,100 was 2.2% lower than the July 1997 estimate (472,400). For the same period, the decrease in trend part-time employment was more pronounced; down by 7.7% to 175,200 in July 1998.

Employed persons



Labour force participation

The labour force participation rate expresses the labour force (or all employed and unemployed persons) as a percentage of the total population aged 15 and over. It measures the economically productive or active element in the working age population.

The trend estimate of the labour force participation rate in South Australia in July 1998 was 59.5%. This was the lowest level recorded on the mainland. It was also the lowest estimate since January 1984 when the rate was 59.4%. Nationally, the participation rate for July 1998 was much higher at 63.4%. A combination of factors, including the ageing of the State population, falling birth rates, declining female labour force participation since April 1997, and a growing tendency to undertake post-school education, have contributed to recent falls in the State rate.

From another perspective, the number of people (aged 15 and over) who were not in the labour force (neither employed nor unemployed) rose by 7.2% to 483,200 in the twelve months to July 1998. Moreover, the current level is 12.9% higher than the estimate of ten years ago (427,900).

Unemployment

The trend unemployment rate for South Australia has risen gradually over the past twelve months; up from 9.7% in July 1997 to 10.1% in July 1998. In contrast, the trend unemployment rate for Australia was 8.2% in July 1998, lower than the 8.6% recorded a year earlier.

In unadjusted, original terms, the teenage full-time unemployment rate in South Australia has increased from 29.7% in June 1998 to 35.5% in July 1998. The latest result indicates that 7,900 persons aged 15-19 were actively seeking full-time work, out of a teenage, full-time labour force of 22,300. However, it does not mean that over 3 in 10 of the State's teenagers are unemployed. The majority of 15 to 19 year olds in South Australia were unavailable for full-time work, with 44,800 being full-time students and 28,300 in the part-time labour force only.

Unemployment rates: **Trend**

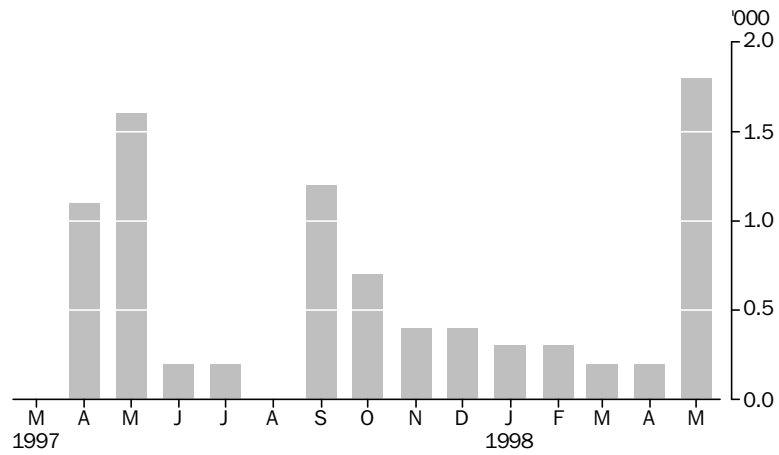


Industrial disputes

In May 1998 a total of 1,800 working days were lost through industrial disputation, a large increase from the previous month when 200 days were lost. South Australia had a low level of industrial disputation, contributing less than 2% to the national level of 96,100 working days lost.

The number of working days lost in South Australia in the 12 months to May 1998 was 5,900, much lower than the 21,100 days lost in the 12 months to May 1997.

Industrial disputes, working days lost



Overtime

In original terms, the proportion of employees who worked overtime in May 1998 was 12.8%, compared with 15.9% in May 1997.

In May 1998, employees who worked overtime in South Australia recorded an average of 5.6 overtime hours per week. This was lower than the 6.8 overtime hours recorded 12 months earlier.

INCOMES

Average weekly earnings

The trend estimate of average weekly ordinary time earnings of full-time adult employees fell 0.5% from February 1998 to May 1998. The full-time adult ordinary time earnings for males and females decreased 0.2% and 1.0% respectively.

Between May 1997 and May 1998, the trend estimate of average weekly ordinary time earnings of full-time adult male employees increased 3.3% whilst the female rate increased 7.8%.

For Australia, the trend estimate of full-time adult ordinary time earnings for males and females rose by 4.0% and 4.1% respectively in the 12 months to May 1998.

Note: Since it is an average of earnings across all employees, changes in average weekly earnings may occur through changes in employment as well as changes in pay levels.

Wage cost index

The Wage Cost Index measures quarterly changes in wage and salary costs for employee jobs. Hourly rates of pay are collected on both an ordinary time and total time basis, with or without bonuses. The first reference period is the quarter to December 1997. This new measure replaces the discontinued award rates of pay index.

In South Australia, the index of total hourly rates of pay (excluding bonuses) increased by 0.7% between December 1997 and March 1998. Nationally, the corresponding increase was 0.9%.

In South Australia, the index of ordinary time hourly rates of pay (excluding bonuses) rose by 0.7% in the quarter to March 1998. The Australian rate increased 0.9% for the same period.

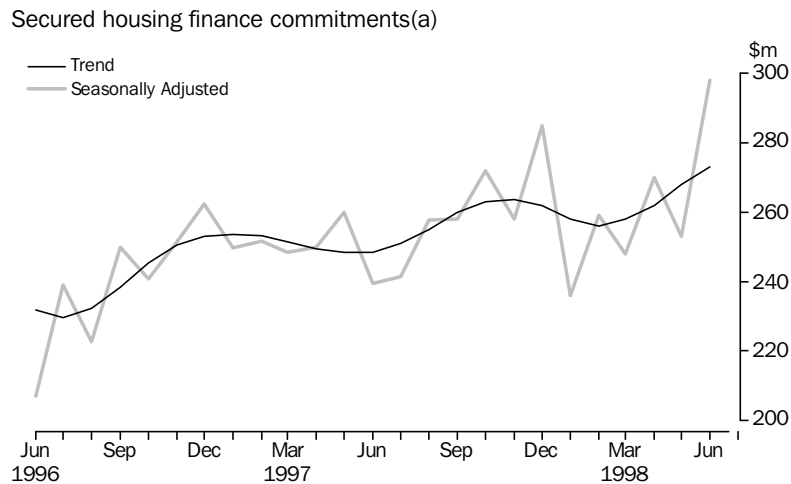
FINANCIAL MARKETS**Housing finance**

The trend estimate for the value of new housing commitments (excluding alterations and additions) increased marginally during June 1998 to \$273.0m. The seasonally adjusted value increased 17.8% to \$298.0m to be 24.2% higher than June 1997.

Total new commitments (original figures including alterations and additions) increased 19.3% to \$322.0m, 21.4% above the previous June. The average month in 1997–98 was \$272.4m, the highest since 1993–94. Nationally the increase in total new commitments in June was 11.7%, 17.3% higher over the year. The number of dwellings financed in South Australia increased 17.3% to 3,581, 12.9% above the previous June. The average value of commitments increased during the month to \$85,700 compared with the average for Australia of \$117,000.

All categories had significant increases except for commitments for the purchase of newly erected houses. The main increase was for purchase of established dwellings (the largest category), up 13.2% to \$182.0m. Construction of dwellings increased 49.6% to \$48.0m. Both of these groups had the highest June since 1994. The other major increase was for refinancing, up 20.0% to \$68.0m, 28.4% above June 1997.

Alterations and additions increased 16.1% to \$14.0m, 18.0% above June 1997. While commitments for the purchase of newly erected dwellings other than houses doubled to be \$3.0m, the commitments for newly erected houses were down 13.6% to \$6.0m.



(a) Excludes alterations and additions. Includes refinancing.

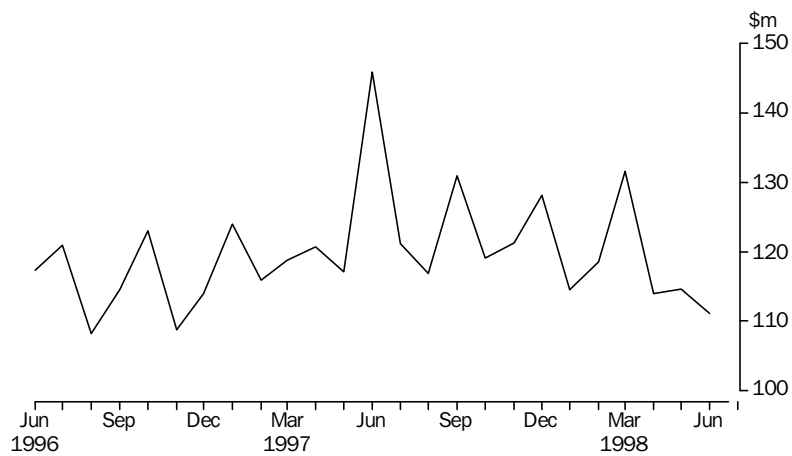
Personal finance

Total personal finance commitments increased 13.3% to the revised total of \$266.8m in June 1998, 6.8% above the previous June. Nationally the increase for the month was 6.5%, 12.8% up over the year. In seasonally adjusted terms the national commitments for personal finance were down 4.0% in June to \$3,564.0m with the main decrease being revolving credit facilities which dropped 5.3%. The average month in South Australia for total personal finance commitments in 1997-98 was \$230.3m compared with \$205.8m in 1996-97, an increase of 11.9%.

Both fixed loan commitments and revolving credit facilities in South Australia were significantly up. Revolving credit facilities rose 16.1% to \$140.5m to be 35.2% higher than June 1997. The main increase occurring for secured revolving credit facilities, up 24.8% to \$89.9m, 54.2% above the previous June.

Fixed loan commitments rose 10.2% to \$126.3m, 13.4% below the previous June. New motor cars and station wagons increased 26.4% to \$18.1m, 17.1% above June 1997 while used increased 5.3% to \$37.3m, 16.4% down over the year. Refinancing increased 10.0% to \$14.5m, 45.1% lower than June 1997. Only two categories decreased during the month, other motor vehicles, down 15.5% to \$4.5m and boats, caravans and trailers which dropped 17.2% to \$1.3m.

Personal fixed loan commitments, all lenders



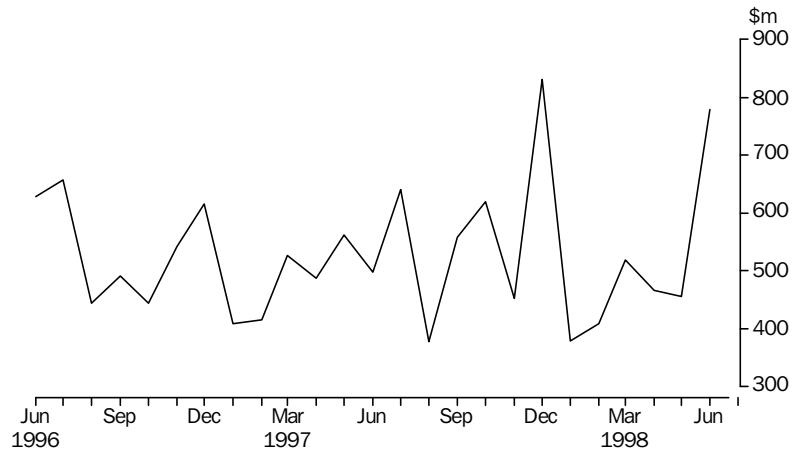
Commercial finance

June 1998 was the first month of the year to be higher than the corresponding month of 1997 with an increase of 70.7% to \$778.7m, 56.4% above the previous June. The Australian total increased 15.8% for the month, 5.0% up for the year. In seasonally adjusted terms this represented a decrease of 12.3% for June. The average month for South Australia in 1997–98 was \$540.5m, 6.5% above the previous year's average.

Revolving credit facilities increased \$189.8m to \$346.6m, \$205.2m above the previous June. The main part of the increase was for manufacturing, up \$127.5m to \$157.2m, the highest month since January 1996. All categories increased except public administration, with property and business services up \$14.2m to \$28.6m, recreation, personal and other services up \$13.4m to \$19.6m and finance, investment and insurance up \$11.1m to \$19.6m.

Commitments under fixed loan facilities increased 44.3% to \$432.1m, to be 21.2% up on June 1997. Transport and storage increased \$31.4m to \$44.7m, and health and community services increased \$30.9m to \$41.3m, the highest recorded month. Agriculture, forestry, fishing and hunting increased \$22.7m to \$60.3m, the highest for two years. Recreation, personal and other services was the only category of fixed loan facilities to decrease with a fall of \$4.7m to \$13.3m.

Commercial finance commitments, all lenders



Lease finance

New finance lease commitments increased for the second consecutive month with a rise of 62.7% to \$37.5m in June 1998, the highest total since June 1992 and 22.5% above the previous June. Similar increases occurred for the Australian total, up 58.2% for June in original figures. This represented an increase of 9.8% when seasonally adjusted. The average month for South Australia in 1997–98 was \$22.3m, up 15.2% on the previous year.

Finance lease commitments for new heavy trucks in South Australia were up \$2.5m to \$3.3m following the low figure recorded in May. Both construction and earthmoving equipment and agricultural machinery and equipment increased \$1.9m, to \$3.0m and \$4.7m respectively. Manufacturing equipment rose \$1.8m to \$3.3m and electronic data processing equipment was up \$1.6m to \$2.5m. The only significant fall was office machines down \$1.9m to \$1.4m following a high month in May.

FORWARD OUTLOOK

Composite leading indicator for Australia

The Composite Leading Indicator (CLI) is a single time series produced by aggregating eight individual economic indicators, and has been developed by the ABS as an experimental series to supplement existing forms of economic analysis and modelling.

The CLI summarises the early signals contained in a selection of economic indicators and is designed to assist the detection of turning points between successive expansions and slow downs of economic activity as measured by constant price GDP(A). It does not attempt to forecast the level of economic activity.

Composite leading indicator for Australia

In the March quarter 1998:

- the experimental CLI fell 0.17%, following a fall of 0.03% in the December quarter 1997. This second consecutive fall gives a provisional peak in the CLI in the September quarter 1997.

The quarterly data are released in more detail in the *Australian Economic Indicators* (Cat. no. 1350.0). The CLI was the topic of the Focus article in the September 1993 edition of *South Australian Economic Indicators* (Cat. no. 1307.4). A review of the performance of the CLI and its components was published in the July 1997 issue of Cat. no. 1350.0.

Business expectations

Surveys of business expectations have been available to decision makers for a number of years from several sources. These surveys provided *qualitative* indicators in the form of the net proportion of businesses expecting a rise or fall in future business conditions. Since the December quarter 1993, the ABS has been compiling a *quantitative* indicator of business expectations in the form of an expected weighted aggregate change in a range of economic variables. These data are available on a quarterly basis in *Australian Business Expectations* (Cat. no. 5250.0).

South Australia, Short-term outlook expected aggregate change

.....
 EXPECTED AGGREGATE CHANGE
 OVER THE PREVIOUS QUARTER.....

	Sep qtr 1997	Dec qtr 1997	Mar qtr 1998	Jun qtr 1998	Sep qtr 1998
<i>Business performance indicators</i>	%	%	%	%	%
Trading performance					
Operating income	0.0	5.1	0.2	1.9	2.0
Selling prices	0.3	0.3	0.2	0.5	0.4
Profit	-3.9	26.5	3.0	2.9	12.4
Investment					
Capital expenditure	5.4	9.5	1.5	9.8	2.6
Stocks	-0.4	0.6	1.9	0.2	-2.4
Employment					
Full time equivalent	-0.4	1.0	0.1	-0.1	-1.2

Short term—South Australian businesses expect an increase of 2.0% in operating income in the September quarter 1998 compared with the June quarter 1998 whilst the Australian rate was 1.1%. The investment component for South Australia was expected to be 2.6% increase in capital expenditure compared with 3.8% for Australia whilst full-time employment levels were expected to fall 1.2% for South Australia and 0.7% for Australia.

South Australia, Medium-term outlook expected aggregate change

EXPECTED AGGREGATE CHANGE OVER THE
SAME QUARTER OF THE
PREVIOUS YEAR.....

	<i>Jun qtr</i> 1998	<i>Sep qtr</i> 1998	<i>Dec qtr</i> 1998	<i>Mar qtr</i> 1999	<i>Jun qtr</i> 1999
<i>Business performance indicators</i>	%	%	%	%	%
Trading performance					
Operating income	3.4	4.8	4.3	2.7	3.4
Selling prices	0.9	0.8	0.8	0.7	0.8
Profit	11.2	25.3	18.1	22.7	20.9
Investment					
Capital expenditure	-0.8	3.0	2.3	-2.0	8.6
Stocks	0.3	1.1	2.0	0.2	0.3
Employment					
Full time equivalent	0.0	-0.3	-1.5	-1.3	-0.5

Medium term—Businesses in South Australia expect operating income in the June quarter 1999 to be 3.4% above June quarter 1998. Capital expenditure was expected to increase by 8.6% whilst employment indicators are showing negative change of 0.5%. The Australian data shows a 3.2% increase in capital expenditure and a 0.5% fall in employment levels.

LIST OF TABLES

Page

TABLES

1	Statistical summary	24
	Time series	
2	State accounts—current prices	26
3	State accounts—average 1989–90 prices	27
4	Merchandise exports by selected commodity group	28
5	Merchandise exports by selected countries	29
6	Merchandise exports by industry of origin	30
7	Merchandise imports by selected commodity group	31
8	Turnover of retail establishments by industry	32
9	New motor vehicle registrations by type of vehicle	33
10	Actual private new capital expenditure by selected industry and type of asset	34
11	Tourist accommodation	35
12	Building approvals	36
13	Building commencements	37
14	Value of building work done during period	38
15	Production, livestock products and selected commodities	39
16	Consumer price index, by group—Adelaide	40
17	Average retail prices of selected consumer items—Adelaide	41
18	Estimated resident population and components of population change	42
19	Civilian labour force status	43
20	Civilian labour force, unemployment and participation rates	44
21	Average weekly earnings of employees	45
22	Finance commitments	46

Indicator	SOUTH AUSTRALIA.....						AUSTRALIA.....				
	Unit	Period	Number	% change from.....		Number	% change from.....		SA as a % of Aust.	Source index	
				Previous period	Same period previous year		Previous period	Same period previous year			
State accounts											
Domestic final demand											
Current prices trend	\$m	Mar qtr 98	9 574	0.8	5.7	136 047	1.2	6.0	7.0	(1)	
1989-90 prices trend	\$m	Mar qtr 98	8 209	0.5	4.9	117 829	0.7	4.8	7.0	(1)	
Private final consumption expenditure											
Current prices trend	\$m	Mar qtr 98	6 197	1.5	5.7	84 696	1.2	5.8	7.3	(1)	
1989-90 prices trend	\$m	Mar qtr 98	5 224	1.2	5.2	70 823	0.8	4.6	7.4	(1)	
Private gross fixed capital expenditure											
Current prices trend	\$m	Mar qtr 98	1 471	3.7	17.5	23 985	2.3	12.3	6.1	(1)	
1989-90 prices trend	\$m	Mar qtr 98	1 380	2.6	14.5	23 723	1.2	11.6	5.8	(1)	
Wages, salaries and supplements											
Current prices trend	\$m	Mar qtr 98	4 815	1.4	6.3	68 512	1.5	5.5	7.0	(1)	
International accounts											
Exports	\$m	Jun 98	412.4	-6.6	2.3	7 269.2	-1.8	12.6	5.7	(2)	
Imports	\$m	Jun 98	315.2	1.1	11.3	8 464.7	10.5	23.1	3.7	(2)	
Consumption and investment											
Retail turnover											
Current prices original	\$m	Jun 98	815.5	-4.7	9.9	10 717.5	-4.4	4.9	7.6	(3)	
Current prices trend	\$m	Jun 98	871.7	0.6	8.6	11 352.0	0.1	3.6	7.7	(3)	
1989-90 prices original	\$m	Jun qtr 98	2 067.4	4.1	8.3	26 971.4	2.6	2.9	7.7	(3)	
New motor vehicle registrations											
Original	no.	Jun 98	5 761	31.6	29.8	88 065	35.4	30.1	6.5	(4)	
Trend	no.	Jun 98	4 670	2.8	22.4	69 352	2.3	18.5	6.7	(4)	
Private new capital expenditure											
Current prices original	\$m	Mar qtr 98	721	-24.3	38.4	10 326	-19.4	3.7	7.0	(5)	
Current prices trend	\$m	Mar qtr 98	838	2.7	32.4	11 724	1.7	6.8	7.1	(5)	
1996-97	\$m	1996-97	2 580	..	37.7	43 837	..	8.3	5.9	(5)	
Takings, licensed hotels, motels, guesthouses and apartments with facilities	\$m	Mar qtr 98	44.0	n.a.	8.7	955.5	n.a.	2.7	4.6	(5)	
Production											
Dwelling unit approvals											
Original	no.	Jun 98	810	34.6	35.7	14 655	5.0	26.6	5.5	(7)	
Trend	no.	Jun 98	662	1.4	13.4	13 951	1.1	17.7	4.7	(7)	
Dwelling units commenced	no.	Mar qtr 98	1 653	-13.3	32.6	34 576	-10.6	9.4	4.8	(8a)	
Value of non-residential building approvals	\$m	Jun 98	36.5	-4.5	-60.3	1 214.7	-17.8	14.7	3.0	(7)	
Value of total building activity											
Commenced	\$m	Mar qtr 98	281.3	-27.4	10.9	7 428.1	-13.4	6.0	3.8	(8)	
Work done	\$m	Mar qtr 98	327.2	-16.3	13.1	7 475.3	-9.8	9.7	4.4	(8)	
Work yet to be done	\$m	Mar qtr 98	300.3	-10.3	-7.0	12 588.7	2.6	22.3	2.4	(8)	
Value of engineering construction work done	\$m	Mar qtr 98	302.8	1.2	51.2	4 386.5	5.3	30.3	6.9	(9)	
Manufacturing production											
Red meat	tonnes	Jun 98	13 720	-9.6	-14.4	241 750	-0.9	5.7	5.7	(11)	
Mineral exploration expenditure (other than for petroleum)	\$m	Mar qtr 98	9.2	-19.3	27.8	220.4	-21.8	-6.5	4.2	(12)	

SOUTH AUSTRALIA.....

AUSTRALIA.....

Indicator	Unit	Period	Number	% change from.....		Number	% change from		SA as a % of Aust.	Source index
				Previous period	Same period previous year		Previous period	Same period previous year		
Prices										
CPI – All groups	1989–90=100	Jun qtr 98	122.4	0.6	0.4	121.0	0.6	0.7	..	(13)
Price index of materials used in house building	1989–90=100	Jun qtr 98	124.1	0.3	2.1	119.0	0.3	1.7	..	(14)
Price index of materials used in building other than houses	1989–90=100	Jun qtr 98	115.6	0.5	0.8	114.5	0.4	0.5	..	(15)
Price index of established houses	1989–90=100	Mar qtr 98	114.0	2.9	4.3	124.2	2.5	7.7	..	(16)
Price index of project homes	1989–90=100	Mar qtr 98	113.7	1.1	5.6	110.4	0.4	1.1	..	(16)
Labour force and demography										
Population (resident at end qtr)	'000	Dec qtr 97	1 482.9	0.1	0.5	18 631.1	0.2	1.1	8.0	(17)
Short-term overseas visitor arrivals	no.	Jun 98	3 647	-26.1	-14.6	304 194	7.3	-1.3	1.2	(21)
Short-term resident departures	no.	Jun 98	13 367	-4.8	10.9	282 271	3.5	0.8	4.7	(21)
Labour force										
Original	'000	Jul 98	709.2	0.0	-3.3	9 364.6	0.2	1.8	7.6	(18)
Trend	'000	Jul 98	709.2	-0.2	-3.3	9 361.1	0.2	1.8	7.6	(18)
Employed persons										
Original	'000	Jul 98	640.0	-0.1	-3.4	8 636.8	0.3	2.2	7.4	(18)
Trend	'000	Jun 98	637.3	-0.3	-3.8	8 594.4	0.1	2.3	7.4	(18)
Participation rate										
Original(a)	%	Jul 98	59.5	0.0	-2.2	63.4	0.1	0.3	..	(18)
Trend(a)	%	Jul 98	59.5	-0.1	-2.4	63.4	0.1	0.3	..	(18)
Unemployment rate										
Original(a)	%	Jul 98	9.8	0.2	0.5	7.8	-0.1	-0.4	..	(18)
Trend(a)	%	Jul 98	10.1	0.0	0.4	8.2	0.0	-0.4	..	(18)
Job vacancies	'000	May 98	2.7	-18.2	-10.0	73.3	-2.9	26.2	3.7	(19)
Average weekly overtime per employee working overtime	hours '000 working	May 98	5.6	3.4	-18.4	6.7	-0.1	-4.7	..	(19)
Industrial disputes	days lost	May 98	1.8	800.0	12.5	96.1	334.8	25.5	1.9	(20)
Incomes										
Average weekly earnings (full-time adults; ordinary time)										
Original	\$	May 98	680.10	-0.5	3.7	726.9	0.6	4.3	..	(22)
Trend	\$	May 98	682.10	1.2	4.2	725.9	0.8	3.9	..	(22)
Wage cost index (Total hourly rate excluding bonuses)										
	Sep 1997=100	Mar 98	101.5	0.7	..	101.7	0.9	(23)
Financial markets										
Secured housing finance	\$m	Jun 98	322.0	19.3	21.4	5 378.0	11.7	17.3	6.0	(24)
Finance commitments										
Personal	\$m	Jun 98	266.8	13.3	6.8	3 877.4	6.5	12.8	6.9	(25)
Commercial	\$m	Jun 98	778.7	70.7	56.4	16 452.2	15.8	5.0	4.7	(25)
Lease	\$m	Jun 98	37.5	62.7	22.5	1 161.6	58.2	25.7	3.2	(25)
Interest rates										
Banks new housing loans(a)	%	Jul 98	6.70	0.0	-0.50	..	(26)
Banks business loans(a)										
Small, medium sized business	%	Jul 98	7.70	0.0	-1.55	..	(26)
Large business	%	Jul 98	8.05	0.0	-0.90	..	(26)

(a) Change is shown in terms of percentage points.

Period	FINAL CONSUMPTION EXPENDITURE.....		GROSS FIXED CAPITAL EXPENDITURE....		State final demand	Gross State product (I)	Wages, salaries and supplements
	Private	Government	Private	Government			
ANNUAL (\$m)							
1991-92	18 958	5 812	4 021	1 429	30 220	28 719	14 718
1992-93	19 493	5 969	3 980	1 372	30 814	29 989	15 131
1993-94	20 596	6 628	4 019	1 182	32 426	32 057	16 370
1994-95	21 778	6 704	4 889	1 250	34 621	33 437	16 712
1995-96	23 016	6 750	4 510	1 011	35 287	35 457	17 556
1996-97	23 396	6 802	4 866	1 117	36 181	36 023	18 009
PERCENTAGE CHANGE FROM PREVIOUS YEAR							
1991-92	4.6	6.1	-5.0	-6.5	2.9	1.0	-0.2
1992-93	2.8	2.7	-1.0	-4.0	2.0	4.4	2.8
1993-94	3.8	5.4	-1.1	-13.5	2.6	3.3	8.2
1994-95	5.7	1.1	21.6	5.8	6.8	4.3	2.1
1995-96	5.7	0.7	-7.7	-19.1	1.9	6.0	5.1
1996-97	1.7	0.8	7.9	10.5	2.5	1.6	2.6
QUARTERLY, ORIGINAL (\$m)							
1996-97							
December	6 134	1 711	1 288	264	9 397	9 849	4 624
March	5 615	1 575	1 021	315	8 526	8 634	4 404
June	5 858	1 885	1 352	315	9 409	9 006	4 546
1997-98							
September	5 997	1 747	1 538	219	9 277	n.a.	4 692
December	6 443	1 677	1 313	333	9 992	n.a.	4 898
March	5 964	1 568	1 538	160	9 068	n.a.	4 616
QUARTERLY, TREND (\$m)							
1996-97							
December	5 830	1 678	1 175	293	8 976	8 976	4 498
March	5 861	1 712	1 207	278	9 058	9 049	4 528
June	5 929	1 734	1 268	282	9 213	9 116	4 585
1997-98							
September	6 017	1 733	1 349	288	9 387	n.a.	4 667
December	6 108	1 703	1 418	274	9 502	n.a.	4 748
March	6 197	1 660	1 471	245	9 574	n.a.	4 815
PERCENTAGE CHANGE FROM PREVIOUS QUARTER, TREND							
1996-97							
December	0.5	1.1	1.4	1.7	0.8	0.8	0.9
March	0.5	2.0	2.7	-5.1	0.9	0.8	0.7
June	1.2	1.3	5.1	1.4	1.7	0.7	1.3
1997-98							
September	1.5	-0.1	6.4	2.1	1.9	..	1.8
December	1.5	-1.7	5.1	-4.9	1.2	..	1.7
March	1.5	-2.5	3.7	-10.6	0.8	..	1.4

Period	FINAL CONSUMPTION EXPENDITURE....		GROSS FIXED CAPITAL EXPENDITURE....		State final demand	Gross State product (I)
	Private	Government	Private	Government		
ANNUAL (\$m)						
1991–92	17 447	5 328	3 849	1 364	27 988	27 023
1992–93	17 491	5 358	3 696	1 292	27 837	28 077
1993–94	18 150	5 646	3 655	1 118	28 568	29 004
1994–95	19 020	5 765	4 448	1 175	30 408	29 226
1995–96	19 732	5 713	4 094	948	30 487	30 465
1996–97	19 811	5 711	4 718	1 038	31 278	30 868
PERCENTAGE CHANGE FROM PREVIOUS YEAR						
1991–92	1.6	2.3	-6.0	-7.8	1.4	-2.4
1992–93	0.3	0.6	-4.0	-5.3	-0.5	3.9
1993–94	3.8	5.4	-1.1	-13.5	2.6	3.3
1994–95	4.7	2.1	21.7	5.1	6.4	0.8
1995–96	3.9	-0.9	-8	-19.2	0.3	4.2
1996–97	0.6	-0.5	15.7	9.4	2.7	1.3
QUARTERLY, ORIGINAL (\$m)						
1996–97						
December	5 212	1 417	1 272	245	8 146	8 701
March	4 749	1 322	985	291	7 347	7 280
June	4 967	1 568	1 292	295	8 121	7 524
1997–98						
September	5 071	1 435	1 279	189	7 973	n.a.
December	5 453	1 399	1 464	302	8 619	n.a.
March	5 033	1 286	1 275	146	7 741	n.a.
QUARTERLY, TREND (\$m)						
1996–97						
December	4 954	1 402	1 150	272	7 779	7 717
March	4 965	1 431	1 175	258	7 829	7 701
June	5 019	1 445	1 226	257	7 948	7 662
1997–98						
September	5 094	1 439	1 296	259	8 087	n.a.
December	5 164	1 411	1 345	247	8 167	n.a.
March	5 224	1 382	1 380	223	8 209	n.a.
PERCENTAGE CHANGE FROM PREVIOUS QUARTER, TREND						
1996–97						
December	0.1	0.9	2.2	1.5	0.6	0.1
March	0.2	2.1	2.2	-5.1	0.6	-0.2
June	1.1	1.0	4.3	-0.4	1.5	-0.5
1997–98						
September	1.5	-0.4	5.7	0.8	1.7	..
December	1.4	-1.9	3.8	-4.6	1.0	..
March	1.2	-2.1	2.6	-9.7	0.5	..

4

MERCHANDISE EXPORTS, By Selected Commodity Group(a)

<i>Period</i>	<i>Meat and meat preparations</i>	<i>Cereals and cereal preparations</i>	<i>Wine</i>	<i>Wool and sheepskins</i>	<i>Machinery</i>	<i>Metals and metal manu- factures</i>	<i>Fish and crustaceans</i>	<i>Road vehicles, parts and accessories</i>	<i>Petroleum and petroleum products</i>	<i>Total</i>
	\$'000	\$'000	\$'000	\$'000	\$'000	\$'000	\$'000	\$'000	\$'000	\$'000
ANNUAL										
1992-93	282 181	573 375	192 255	318 989	211 426	490 594	154 608	338 359	372 445	3 760 602
1993-94	324 796	436 517	238 366	290 963	223 760	462 355	186 861	351 229	276 473	3 889 783
1994-95	307 785	261 052	250 527	301 645	285 309	571 094	191 386	332 321	285 310	3 829 336
1995-96	244 508	713 092	318 534	240 148	340 205	610 899	196 629	249 237	220 915	4 498 532
1996-97	182 478	745 227	397 949	260 974	378 923	542 204	191 093	655 916	286 458	5 012 652
1997-98	218 002	527 684	563 694	286 481	401 580	574 146	235 920	479 325	237 946	4 983 534
MONTHLY										
1996-97										
April	17 415	61 510	34 047	25 234	31 992	39 508	19 935	45 176	26 197	416 218
May	16 003	16 145	36 804	26 233	35 384	55 444	15 449	39 717	15 488	367 824
June	15 421	18 987	30 160	23 847	29 641	47 560	11 051	57 105	36 706	406 373
1997-98										
July	12 693	18 848	38 625	31 249	41 558	47 372	16 678	53 516	14 509	407 524
August	11 641	18 715	44 669	17 560	31 082	43 635	18 826	60 483	39 320	419 433
September	15 556	27 715	62 570	24 139	38 751	50 905	18 769	18 938	26 927	383 286
October	17 450	10 488	62 258	23 438	26 461	37 876	23 608	39 356	10 935	360 806
November	21 311	8 737	33 344	29 856	41 032	61 843	18 039	83 677	18 110	454 765
December	22 742	67 159	36 065	35 568	38 306	40 932	13 637	72 253	33 679	482 274
January	15 469	92 923	25 835	20 260	21 783	56 613	24 571	15 137	12 427	373 005
February	21 174	45 383	43 690	17 710	27 617	41 114	18 281	19 097	18 197	363 933
March	23 937	62 521	55 440	26 154	37 495	51 672	22 851	37 642	19 792	474 806
April	20 217	71 491	50 606	16 031	30 937	47 991	21 567	24 260	12 089	409 939
May	19 708	36 499	58 198	28 233	41 170	44 439	18 245	30 751	18 406	441 336
June	16 104	67 205	52 394	16 283	25 388	49 754	20 848	24 215	13 555	412 427

(a) Final stage of production in South Australia.

5

MERCHANDISE EXPORTS, By Selected Countries(a)

Period	EUROPEAN COMMUNITY.....				EAST ASIA.....					
	<i>United States of America</i>	<i>Middle East</i>	<i>United Kingdom</i>	<i>Total European Community</i>	<i>New Zealand</i>	<i>Japan</i>	<i>China</i>	<i>Hong Kong</i>	<i>ASEAN</i>	<i>Total East Asia</i>
	\$'000	\$'000	\$'000	\$'000	\$'000	\$'000	\$'000	\$'000	\$'000	\$'000
ANNUAL										
1992-93	352 764	314 049	237 520	594 701	288 421	649 684	208 135	171 803	487 174	1 820 065
1993-94	393 611	280 499	263 092	571 047	311 999	625 481	220 211	165 163	533 977	1 898 975
1994-95	329 878	184 342	246 118	553 051	376 262	682 937	177 875	193 014	551 433	2 004 013
1995-96	279 555	525 348	287 727	691 996	376 628	672 885	293 360	202 307	572 529	2 057 945
1996-97	707 871	563 409	304 645	641 308	382 103	611 870	244 917	234 547	614 481	2 030 435
1997-98	631 689	399 032	423 878	848 998	354 595	611 718	330 998	239 329	489 931	2 021 112
MONTHLY										
1996-97										
April	59 320	49 119	26 023	52 789	22 885	50 829	33 261	18 598	61 197	185 592
May	49 537	30 815	26 602	63 284	21 142	47 286	17 553	16 373	50 567	166 869
June	83 248	19 843	21 783	60 136	21 859	56 675	15 479	17 994	59 211	180 155
1997-98										
July	75 629	33 014	27 348	60 442	25 538	47 644	31 626	15 779	55 728	178 994
August	80 052	22 224	43 757	72 636	22 840	51 224	21 497	16 567	56 417	175 291
September	25 569	14 786	43 947	79 167	31 032	64 737	22 139	22 409	53 528	182 763
October	26 279	10 465	55 190	89 953	41 159	52 529	27 453	10 146	41 821	149 676
November	92 792	20 278	26 755	56 937	26 054	65 589	33 375	28 165	65 238	224 741
December	80 392	41 986	27 798	59 759	17 407	54 762	33 218	25 272	50 982	196 158
January	19 822	50 590	16 660	37 176	23 869	39 153	24 536	27 258	34 097	155 151
February	33 918	32 808	28 220	69 544	29 889	36 610	36 857	23 072	19 942	137 444
March	63 876	57 910	33 359	78 026	37 792	48 441	37 414	21 224	39 524	180 747
April	38 291	52 361	39 893	78 588	35 943	45 054	12 572	14 668	20 870	126 918
May	43 269	29 726	46 313	99 497	32 098	51 023	28 395	19 964	24 953	159 590
June	51 800	32 884	34 638	67 273	30 974	54 952	21 916	14 805	26 831	153 639

(a) Final stage of production in South Australia.

6

MERCHANDISE EXPORTS, By Industry of Origin(a)

MANUFACTURING.....

Period	Agriculture, forestry and fishing	Mining	Food, beverages and tobacco	Petroleum, coal, chemical associated product	Metal product	Machinery and equipment	Other manu- facturing	Other industries/ confidential	Total
	\$'000	\$'000	\$'000	\$'000	\$'000	\$'000	\$'000	\$'000	\$'000
ANNUAL									
1992-93	883 725	294 586	766 518	195 387	509 303	641 930	178 726	290 427	3 760 602
1993-94	733 014	245 247	884 737	180 147	475 060	665 066	208 573	497 938	3 889 783
1994-95	592 129	268 537	886 337	186 661	584 838	711 529	243 314	355 991	3 829 336
1995-96	1 014 521	226 309	978 332	172 285	639 267	674 131	226 496	567 191	4 498 532
1996-97	1 067 084	205 433	981 918	290 361	569 715	1 140 136	229 503	528 502	5 012 652
1997-98	955 157	137 850	1 204 111	292 206	615 091	994 314	262 364	522 441	4 983 534
MONTHLY									
1996-97									
April	88 522	30 741	86 093	17 247	40 315	96 254	19 110	37 936	416 218
May	42 278	991	85 038	27 163	59 593	85 068	20 725	46 969	367 824
June	54 021	32 623	75 807	27 816	51 123	92 591	17 531	54 860	406 373
1997-98									
July	79 999	20 940	83 465	14 706	48 601	105 329	24 710	29 775	407 524
August	51 751	11 810	93 510	37 889	48 749	99 482	24 132	52 109	419 433
September	55 954	22 149	115 717	24 155	55 582	65 692	21 983	22 055	383 286
October	43 738	1 722	119 482	18 055	39 144	73 873	19 047	45 743	360 806
November	45 830	16 715	89 418	25 488	67 645	134 177	22 046	53 446	454 765
December	101 555	28 936	88 087	26 808	45 353	121 929	21 840	47 765	482 274
January	121 012	6 767	77 125	17 938	58 344	43 235	18 399	30 186	373 005
February	77 117	805	91 562	25 843	42 630	56 114	19 539	50 324	363 933
March	110 425	13 279	116 812	23 588	55 728	86 297	29 967	38 709	474 806
April	94 673	896	105 768	22 179	51 670	64 034	20 346	50 373	409 939
May	72 266	3 524	118 752	30 653	49 562	84 581	23 510	58 488	441 336
June	100 837	10 307	104 413	24 904	52 083	59 571	16 845	43 468	412 427

(a) Final stage of production in South Australia.

7

MERCHANDISE IMPORTS, By Selected Commodity Group(a)

<i>Period</i>	<i>Food, beverages and tobacco</i>	<i>Petroleum and petroleum products</i>	<i>Chemicals</i>	<i>Textiles</i>	<i>Metals and metal manufactures</i>	<i>Machinery</i>	<i>Road, vehicles, parts and accessories</i>	<i>Other manufactured goods</i>	<i>Total</i>
	\$'000	\$'000	\$'000	\$'000	\$'000	\$'000	\$'000	\$'000	\$'000
ANNUAL									
1992-93	91 756	570 334	186 001	57 434	255 924	609 212	661 714	521 723	3 068 122
1993-94	99 177	404 626	200 225	60 172	160 937	595 238	663 617	484 590	2 803 446
1994-95	115 930	330 430	220 536	64 524	214 432	695 038	749 658	563 368	3 099 510
1995-96	118 237	346 397	254 102	76 847	213 487	675 869	546 445	728 096	3 114 309
1996-97	136 695	505 633	225 187	79 708	223 259	868 346	538 690	695 238	3 413 043
1997-98	148 754	444 962	276 074	94 035	280 571	1 062 070	772 572	739 399	3 942 493
MONTHLY									
1996-97									
April	10 428	58 416	18 075	7 691	19 477	62 146	55 134	50 015	297 599
May	11 588	45 354	19 293	6 467	15 123	54 510	35 983	48 198	246 008
June	9 424	39 315	20 252	7 109	20 569	66 474	54 586	48 670	283 146
1997-98									
July	10 522.0	66 543	14 283	6 781	22 112	107 428	83 398	56 474	376 173
August	12 208	29 929	13 882	6 401	24 929	75 139	81 995	53 136	305 788
September	13 380	61 141	13 489	7 031	21 941	79 644	58 896	80 302	343 992
October	15 074	2 052	12 983	8 211	22 588	76 605	67 992	56 732	271 659
November	14 009	67 061	16 244	7 528	21 290	75 564	55 373	51 324	321 543
December	13 857	32 306	22 823	6 607	21 520	115 623	58 610	58 122	342 164
January	13 497	29 721	39 180	8 063	24 670	96 952	54 033	55 479	332 465
February	10 608	39 221	26 096	8 195	27 664	69 791	53 601	70 683	314 325
March	11 294	41 325	31 280	8 679	26 177	86 622	70 446	70 605	356 990
April	10 012	21 834	38 577	9 335	21 141	113 443	61 182	63 091	350 350
May	11 211	38 780	28 339	9 124	21 404	74 393	56 391	60 858	311 865
June	13 082	15 049	18 898	8 080	25 135	90 866	70 655	62 593	315 179

(a) Goods released from Customs control in South Australia.

Period	Food retailing	Department stores	Clothing and soft good retailing	Household good retailing	Recreational good retailing	Other retailing	Hospitality and services	Total
ANNUAL (\$m)								
1992-93	3 081.8	1 101.5	440.4	829.9	324.5	645.0	1 181.8	7 604.9
1993-94	3 253.3	1 107.8	479.0	917.8	378.1	684.0	1 338.8	8 158.8
1994-95	3 477.3	1 128.8	538.0	959.6	383.8	793.5	1 654.4	8 935.4
1995-96	3 786.4	1 138.6	546.6	1 025.8	431.2	902.7	1 762.1	9 593.4
1996-97	4 064.9	1 120.9	467.1	936.9	424.8	792.8	1 648.0	9 455.7
1997-98	4 454.4	1 073.7	541.0	1 084.2	413.3	928.2	1 502.7	10 051.4

MONTHLY, ORIGINAL (\$m)								
1996-97								
April	331.2	86.2	45.3	73.3	32.6	65.0	128.4	762.1
May	344.6	96.2	45.3	77.2	32.0	71.3	132.4	798.9
June	320.2	80.0	40.7	74.9	29.6	63.9	132.5	741.8
1997-98								
July	355.0	97.9	45.8	83.1	31.6	67.5	123.7	804.6
August	349.6	80.5	38.7	83.5	32.0	66.0	127.4	777.6
September	348.9	84.8	38.8	84.5	33.2	65.8	121.1	777.2
October	370.4	92.0	46.3	94.3	34.6	76.1	126.6	840.2
November	365.4	105.6	45.6	95.5	36.6	79.2	129.0	856.9
December	418.2	106.5	58.3	121.3	52.5	107.7	148.4	1 066.8
January	396.1	93.8	45.3	94.2	33.4	77.0	116.1	856.0
February	344.9	76.0	33.0	81.9	29.1	69.3	107.4	741.5
March	373.6	78.4	42.9	85.2	34.2	75.8	120.4	810.5
April	385.7	91.6	49.7	81.6	31.8	80.9	127.3	848.6
May	381.2	86.6	50.0	89.3	31.7	86.1	131.0	855.8
June	365.4	80.0	46.6	89.8	32.5	76.8	124.3	815.5

MONTHLY, TREND (\$m)								
1996-97								
April	344.5	93.1	40.6	76.6	33.4	67.4	137.8	793.3
May	345.3	93.3	41.8	77.8	33.6	67.9	137.7	797.1
June	347.6	93.8	42.9	79.8	34.0	68.0	136.8	802.6
1997-98								
July	350.5	94.0	43.7	82.3	34.4	68.1	134.8	807.8
August	353.8	93.8	44.1	85.0	34.6	68.9	131.7	811.9
September	357.2	93.7	44.2	88.1	34.6	70.7	127.5	815.9
October	360.7	94.2	44.0	90.9	34.5	73.2	122.9	820.3
November	364.6	95.3	43.9	92.8	34.2	76.0	119.0	825.8
December	369.3	96.7	43.9	93.7	34.0	78.5	116.8	832.9
January	374.3	97.7	44.3	93.5	33.8	80.4	117.1	841.0
February	378.8	97.4	44.9	92.6	33.9	81.6	119.6	848.7
March	382.3	95.9	45.6	91.5	34.2	82.2	123.6	855.2
April	384.7	93.7	46.4	90.7	34.6	82.8	128.1	861.0
May	386.6	91.2	47.1	90.1	34.9	83.3	132.5	866.3
June	387.9	89.1	47.8	89.6	35.3	83.6	136.6	871.7

PERCENTAGE CHANGE FROM PREVIOUS MONTH, TREND								
1996-97								
April	0.0	-0.2	3.0	0.9	0.0	1.7	0.4	0.3
May	0.2	0.2	3.0	1.6	0.6	0.7	-0.1	0.5
June	0.7	0.5	2.6	2.6	1.2	0.1	-0.7	0.7
1997-98								
July	0.8	0.2	1.9	3.1	1.2	0.1	-1.5	0.6
August	0.9	-0.2	0.9	3.3	0.6	1.2	-2.3	0.5
September	1.0	-0.1	0.2	3.6	0.0	2.6	-3.2	0.5
October	1.0	0.5	-0.5	3.2	-0.3	3.5	-3.6	0.5
November	1.1	1.2	-0.2	2.1	-0.9	3.8	-3.2	0.7
December	1.3	1.5	0.0	1.0	-0.6	3.3	-1.8	0.9
January	1.4	1.0	0.9	-0.2	-0.6	2.4	0.3	1.0
February	1.2	-0.3	1.4	-1.0	0.3	1.5	2.1	0.9
March	0.9	-1.5	1.6	-1.2	0.9	0.7	3.3	0.8
April	0.6	-2.3	1.8	-0.9	1.2	0.7	3.6	0.7
May	0.5	-2.7	1.5	-0.7	0.9	0.6	3.4	0.6
June	0.3	-2.3	1.5	-0.6	1.1	0.4	3.1	0.6

Period	ORIGINAL.....			SEASONALLY ADJUSTED.....			TREND ESTIMATE.....		
	Passenger vehicles	Other vehicles	Total	Passenger vehicles	Other vehicles	Total	Passenger vehicles	Other vehicles	Total
ANNUAL									
1991-92	32 351	5 333	37 684
1992-93	32 894	5 577	38 471
1993-94	32 806	5 781	38 587
1994-95	35 830	6 736	42 566
1995-96	36 067	6 828	42 895
1996-97	36 146	6 970	43 116
1997-98	43 407	7 453	50 860
PERCENTAGE CHANGE FROM PREVIOUS YEAR									
1991-92	-6.9	-19.4	-8.9
1992-93	1.7	4.6	2.1
1993-94	-0.3	3.7	0.3
1994-95	9.2	16.5	10.3
1995-96	0.7	1.4	0.8
1996-97	0.2	2.1	0.5
1997-98	20.1	6.9	18.0
MONTHLY									
1996-97									
March	3 034	593	3 627	3 091	622	3 713	3 193	608	3 801
April	3 015	701	3 716	3 263	673	3 936	3 205	608	3 813
May	3 028	612	3 640	3 075	562	3 637	3 211	599	3 810
June	3 659	780	4 439	3 357	593	3 951	3 230	585	3 815
1997-98									
July	3 351	545	3 896	3 227	539	3 766	3 277	571	3 848
August	3 368	508	3 876	3 274	574	3 848	3 362	563	3 925
September	3 619	555	4 174	3 487	577	4 064	3 468	567	4 036
October	3 775	560	4 335	3 537	573	4 110	3 557	581	4 138
November	3 662	537	4 199	3 604	563	4 167	3 606	601	4 207
December	3 781	702	4 483	3 877	661	4 537	3 601	625	4 226
January	2 883	483	3 366	3 657	643	4 300	3 578	649	4 226
February	3 340	640	3 980	3 332	700	4 033	3 575	665	4 240
March	3 661	687	4 348	3 369	592	3 961	3 629	672	4 302
April	3 385	678	4 063	3 812	785	4 597	3 737	672	4 409
May	3 693	686	4 379	3 836	636	4 472	3 876	666	4 542
June	4 889	872	5 761	4 408	610	5 018	4 016	654	4 670
PERCENTAGE CHANGE FROM PREVIOUS MONTH									
1996-97									
March	-8.1	13.0	-5.2	-6.5	8.4	-4.3	1.3	1.7	1.4
April	-0.6	18.2	2.5	5.6	8.2	6.0	0.4	0.0	0.3
May	0.4	-12.7	-2.0	-5.8	-16.5	-7.6	0.2	-1.5	-0.1
June	20.8	27.5	22.0	9.2	5.5	8.6	0.6	-2.3	0.1
1997-98									
July	-8.4	-30.1	-12.2	-3.9	-9.1	-4.7	1.5	-2.4	0.9
August	0.5	-6.8	-0.5	1.5	6.5	2.2	2.6	-1.4	2.0
September	7.5	9.3	7.7	6.5	0.5	5.6	3.2	0.7	2.8
October	4.3	0.9	3.9	1.4	-0.7	1.1	2.6	2.5	2.5
November	-3.0	-4.1	-3.1	1.9	-1.7	1.4	1.4	3.4	1.7
December	3.2	30.7	6.8	7.6	17.4	8.9	-0.1	4.0	0.5
January	-23.8	-31.2	-24.9	-5.7	-2.7	-5.2	-0.6	3.8	0.0
February	15.9	32.5	18.2	-8.9	8.9	-6.2	-0.1	2.5	0.3
March	9.6	7.3	9.2	1.1	-15.4	-1.8	1.5	1.1	1.5
April	-7.5	-1.3	-6.6	13.1	32.6	16.1	3.0	0.0	2.5
May	9.1	1.2	7.8	0.6	-19.0	-2.7	3.7	-0.9	3.0
June	32.4	27.1	31.6	14.9	-4.1	12.2	3.6	-1.8	2.8

Period	INDUSTRY.....			Total	TYPE OF ASSET.....	
	Mining	Manu- facturing	Other selected industries		New buildings and structures	Equipment, plant and machinery
ANNUAL (\$m)						
1991-92	193	763	668	1 625	392	1 233
1992-93	218	564	739	1 522	416	1 105
1993-94	97	613	773	1 484	356	1 128
1994-95	115	829	1 162	2 106	351	1 755
1995-96	196	756	921	1 873	358	1 515
1996-97	489	840	1 251	2 580	594	1 985
PERCENTAGE CHANGE FROM PREVIOUS YEAR						
1991-92	58.4	2.9	-32.3	-12.2	-37.5	0.8
1992-93	12.8	-26.1	10.6	-6.4	6.1	-10.4
1993-94	-55.5	8.7	4.6	-2.5	-14.5	2.0
1994-95	18.3	35.2	50.3	41.9	-1.4	55.6
1995-96	70.4	-8.8	-20.7	-11.1	2.0	-13.7
1996-97	149.5	11.1	35.8	37.7	65.9	31.0
QUARTERLY, ORIGINAL (\$m)						
1996-97						
December	82	234	373	688	172	517
March	79	198	245	521	130	391
June	267	221	234	720	160	563
1997-98						
September	345	170	201	716	159	557
December	447	265	241	953	196	757
March	360	168	193	721	188	534
PERCENTAGE CHANGE FROM PREVIOUS QUARTER, ORIGINAL						
1996-97						
December	34.4	25.1	-6.5	6.3	29.3	0.6
March	-3.7	-15.4	-34.3	-24.3	-24.4	-24.4
June	238.0	11.6	-4.5	38.2	23.1	44.0
1997-98						
September	29.2	-23.1	-14.1	-0.6	-0.6	-1.1
December	29.6	55.9	19.9	33.1	23.3	35.9
March	-19.5	-36.6	-19.9	-24.3	-4.1	-29.5
QUARTERLY, TREND (\$m)						
1996-97						
December	n.a.	n.a.	n.a.	629	148	481
March	n.a.	n.a.	n.a.	633	154	479
June	n.a.	n.a.	n.a.	684	157	527
1997-98						
September	n.a.	n.a.	n.a.	766	164	602
December	n.a.	n.a.	n.a.	816	179	637
March	n.a.	n.a.	n.a.	838	194	644
PERCENTAGE CHANGE FROM PREVIOUS QUARTER, TREND						
1996-97						
December	1.8	11.3	-0.6
March	0.6	4.1	-0.4
June	8.1	1.9	10.0
1997-98						
September	12.0	4.5	14.2
December	6.5	9.1	5.8
March	2.7	8.4	1.1

11

TOURIST ACCOMMODATION

Period	HOTELS WITH FACILITIES...			MOTELS AND GUESTHOUSES..			SERVICED APARTMENTS....		
	Guest rooms	Room occupancy	Takings	Flats, units and houses	Room occupancy	Takings	Guest rooms	Room occupancy	Takings
	no.	%	\$'000	no.	%	\$'000	no.	%	\$'000
.....									
QUARTERLY									
1996-97									
March	3 819	56.3	18 629	5 252	55.8	18 548	626	72.6	3 284
1997-98									
March	3 808	60.1	20 851	5 181	57.4	19 247	726	67.6	3 913
.....									
PERCENTAGE CHANGE FROM PREVIOUS YEAR									
1997-98									
March	-0.3	..	11.9	-1.4	..	3.8	16.0	..	19.2
.....									

Period	HOUSES.....		TOTAL DWELLING UNITS.....		Alterations and additions to residential building	Total residential building	Non-residential building	Total building
	Private sector	Total	Private sector	Total				
	no.	no.	no.	no.				
					\$m	\$m	\$m	\$m
ANNUAL								
1992-93	9 715	10 091	11 548	12 341	133	973	418	1 392
1993-94	9 474	9 905	11 046	11 777	122	961	375	1 336
1994-95	7 765	8 155	9 208	9 762	120	860	493	1 353
1995-96	4 938	5 117	5 760	5 968	119	588	566	1 155
1996-97	5 512	5 608	6 148	6 264	117	632	581	1 213
1997-98	6 187	6 380	6 997	7 215	128	758	602	1 360
MONTHLY, ORIGINAL								
1996-97								
May	538	552	599	620	9.9	62.4	64.7	127.1
June	519	541	571	597	9.2	58.7	92.0	150.7
1997-98								
July	572	584	622	634	10.8	61.9	125.1	187.0
August	514	530	552	568	10.1	59.4	63.8	123.2
September	505	527	570	600	10.7	62.5	58.6	121.1
October	523	538	584	599	12.0	63.3	34.1	97.4
November	482	490	544	552	11.1	62.3	64.5	126.7
December	475	482	506	513	10.6	58.6	35.1	93.7
January	365	373	420	431	7.3	44.7	16.1	60.8
February	542	545	663	666	15.6	72.6	41.9	114.5
March	623	671	686	738	10.7	74.3	53.8	128.1
April	461	472	491	502	9.6	53.6	34.6	88.3
May	515	527	588	602	9.2	64.4	38.2	102.6
June	610	641	771	810	10.2	80.3	36.5	116.8
MONTHLY, TREND								
1996-97								
May	520	530	573	588	10.0	55.6	70.8	126.4
June	512	523	568	584	9.8	56.2	77.8	134.0
1997-98								
July	498	512	553	569	9.7	56.6	79.6	136.2
August	486	502	535	553	9.9	57.1	75.0	132.2
September	480	498	525	543	10.1	57.8	65.6	123.4
October	487	505	533	551	10.3	59.1	54.9	114.0
November	504	522	556	575	10.4	60.8	46.9	107.7
December	520	537	581	599	10.4	62.4	42.5	104.8
January	533	548	600	618	10.2	63.6	41.2	104.8
February	540	555	613	630	10.0	64.6	40.6	105.2
March	544	559	620	637	9.9	65.7	39.1	104.8
April	547	563	626	644	9.8	66.9	37.6	104.5
May	551	567	635	653	9.8	68.3	35.8	104.1
June	554	571	644	662	9.8	69.7	35.3	104.9
PERCENTAGE CHANGE FROM PREVIOUS MONTH, TREND								
1996-97								
June	-1.5	-1.3	-0.9	-0.7	-2.0	1.1	9.9	6.0
1997-98								
July	-2.7	-2.1	-2.6	-2.6	-1.0	0.7	2.3	1.6
August	-2.4	-2.0	-3.3	-2.8	2.1	0.9	-5.8	-2.9
September	-1.2	-0.8	-1.9	-1.8	2.0	1.2	-12.5	-6.7
October	1.5	1.4	1.5	1.5	2.0	2.2	-16.3	-7.6
November	3.5	3.4	4.3	4.4	1.0	2.9	-14.6	-5.5
December	3.2	2.9	4.5	4.2	0.0	2.6	-9.4	-2.7
January	2.5	2.0	3.3	3.2	-1.9	1.9	-3.1	0.0
February	1.3	1.3	2.2	1.9	-2.0	1.6	-1.5	0.4
March	0.7	0.7	1.1	1.1	-1.0	1.7	-3.7	-0.4
April	0.6	0.7	1.0	1.1	-1.0	1.8	-3.8	-0.3
May	0.7	0.7	1.4	1.4	0.0	2.1	-4.8	-0.4
June	0.5	0.7	1.4	1.4	0.0	2.0	-1.4	0.8

13

BUILDING COMMENCEMENTS

Period	NEW HOUSES.....		TOTAL DWELLING UNITS(a).....				NON-RESIDENTIAL BUILDING.....		
	Private sector	Total	Private sector	Total	New residential building	Alterations and additions to residential building	Private sector	Total	Total building
	no.	no.	no.	no.	\$m	\$m	\$m	\$m	\$m
ANNUAL									
1991-92	8 036	8 344	9 635	10 700	727.2	125.1	344.5	607.8	1 460.1
1992-93	9 122	9 416	10 889	11 646	816.2	122.4	205.5	458.7	1 397.2
1993-94	9 159	9 590	10 712	11 501	845.3	126.5	209.9	373.0	1 344.8
1994-95	7 745	8 210	9 132	9 796	765.5	125.3	251.7	518.5	1 409.3
1995-96	4 836	5 070	5 691	5 960	496.5	121.7	452.8	631.8	1 250.0
1996-97	5 057	5 113	5 704	5 790	496.3	116.9	423.4	568.8	1 181.9
QUARTERLY									
1995-96									
March	1 044	1 089	1 237	1 295	109.2	29.4	80.1	139.9	278.4
June	1 153	1 183	1 273	1 307	111.0	28.8	217.7	264.0	403.9
1996-97									
September	1 191	1 207	1 302	1 321	108.7	26.2	67.9	104.2	239.1
December	1 245	1 262	1 513	1 530	133.8	33.8	85.3	113.2	280.8
March	1 099	1 102	1 242	1 247	106.3	26.2	76.6	121.2	253.6
June	1 522	1 541	1 655	1 691	147.5	30.7	193.5	230.2	408.4
1997-98									
September	1 354	1 402.0	1 480	1 541	131.9	31.6	84.5	112.3	275.8
December	1 531	1 588	1 835	1 906	179.8	33.8	139.2	174.1	387.7
March	1 414	1 441	1 555	1 653	150.4	38.9	65.1	92.1	281.3

(a) Includes conversions.

Period	NEW HOUSES...		NEW RESIDENTIAL BUILDING.....		Alterations and additions to residential building	NON-RESIDENTIAL BUILDING.....		TOTAL BUILDING.....	
	Private sector	Total	Private sector	Total		Private sector	Total	Private sector	Total
	\$m	\$m	\$m	\$m		\$m	\$m	\$m	\$m
ANNUAL									
1991-92	591.5	607.5	693.4	748.5	125.1	310.3	484.1	1 127.5	1 357.6
1992-93	647.2	660.9	743.8	780.6	127.1	297.9	570.9	1 166.3	1 478.6
1993-94	719.1	746.4	828.9	876.3	132.0	217.7	462.1	1 177.2	1 470.4
1994-95	659.6	693.6	766.1	816.4	129.4	271.6	476.9	1 164.3	1 422.7
1995-96	441.4	460.5	512.9	534.8	130.6	311.4	542.1	953.2	1 207.5
1996-97	433.9	438.9	485.2	490.4	122.2	444.2	663.3	1 049.8	1 275.9
QUARTERLY									
1995-96									
June	102.6	105.0	117.6	120.3	32.6	88.1	155.6	238.3	308.5
1996-97									
September	97.3	99.3	109.4	111.3	28.0	83.4	143.8	219.4	283.1
December	109.1	110.6	121.3	122.8	35.4	119.6	189.8	276.0	348.0
March	99.9	100.3	114.1	114.6	26.8	100.8	147.8	241.6	289.2
June	127.6	128.7	140.5	141.7	32.0	140.4	181.9	312.8	355.6
1997-98									
September	122.5	125.8	136.3	139.9	32.9	149.8	186.7	318.5	359.4
December	134.0	137.7	152.3	157.1	36.2	157.7	197.7	345.2	391.0
March	129.3	131.6	146.1	148.7	31.3	117.3	147.3	294.6	327.2

Period	Pigmeat	Beef	Mutton	Lamb	Gas	Coal	Sawn timber(a)
	tonnes	tonnes	tonnes	tonnes	m MJ	tonnes	m ³
ANNUAL							
1991-92	34 538	90 661	72 578	29 941	78 210	2 819 880	271 603
1992-93	38 153	96 338	65 689	39 334	83 000	2 753 610	317 096
1993-94	38 394	94 395	71 354	45 199	89 382	2 643 000	364 961
1994-95	32 063	99 108	66 759	36 147	86 123	2 554 560	392 349
1995-96	31 695	89 704	55 600	37 735	76 074	2 409 120	413 545
1996-97	29 842	85 478	51 778	34 890	76 495	2 633 820	333 691
1997-98	26 384	80 924	58 554	38 224	n.y.a.	n.y.a.	n.y.a.

PERCENTAGE CHANGE FROM PREVIOUS YEAR							
1991-92	-10.6	4.2	10.9	-6.5	6.7	15.5	13.1
1992-93	10.5	6.3	-9.5	31.4	6.1	-2.4	16.7
1993-94	0.6	-2.0	8.6	14.9	7.7	-4.0	15.1
1994-95	-16.5	5.0	-6.4	-20.0	-3.6	-3.3	7.5
1995-96	-1.1	-9.5	-16.7	4.4	-11.7	-5.7	5.4
1996-97	-5.8	-4.7	-6.9	-7.5	0.6	9.3	-19.3
1997-98	-11.6	-5.3	13.1	9.6

MONTHLY/QUARTERLY							
1996-97							
April	2 507	8 366	5 207	3 485
May	2 827	7 616	3 638	3 453
June	2 532	7 178	2 958	3 288	19 777	720 300	83 742
1997-98							
July	2 446	6 820	1 466	1 448
August	2 665	6 042	4 335	2 380
September	2 320	5 842	5 089	2 766	21 942	752 868	91 537
October	2 263	7 881	5 338	3 846
November	2 273	7 870	5 826	3 226
December	1 765	6 574	5 605	2 891	18 997	610 208	83 957
January	2 018	5 790	6 604	3 092
February	2 586	7 883	6 757	3 552
March	2 126	7 716	6 270	3 917	n.a.	718 990	89 540
April	1 823	7 477	4 805	3 740
May	2 300	5 194	2 815	4 040
June	1 799	6 115	3 561	3 326	n.a.	n.y.a.	n.y.a.

PERCENTAGE CHANGE FROM PREVIOUS MONTH/QUARTER							
1996-97							
April	13.9	22.0	4.7	20.9
May	12.8	-9.0	-30.1	-0.9
June	-10.4	-5.8	-18.7	-4.8	10.2	5.2	22.4
1997-98							
July	-3.4	-5.0	-50.4	-56.0
August	9.0	-11.4	195.7	64.4
September	-12.9	-3.3	17.4	16.2	10.9	4.5	9.3
October	-2.5	34.9	4.9	39.0
November	0.4	-0.1	9.1	-16.1
December	-22.3	-16.5	-3.8	-10.4	-13.4	-18.9	-8.3
January	14.3	-11.9	17.8	7.0
February	28.1	36.1	2.3	14.9
March	-17.8	-2.1	-7.2	10.3	n.a.	17.8	6.6
April	-14.3	-3.1	-23.4	-4.5
May	26.2	-30.5	-41.4	8.0
June	-21.8	17.7	26.5	-17.7	n.a.

(a) From Australian softwood logs only.

<i>Period</i>	<i>Food</i>	<i>Clothing</i>	<i>Housing</i>	<i>Household equipment and operation</i>	<i>Transport- ation</i>	<i>Tobacco and alcohol</i>	<i>Health and personal care</i>	<i>Recreation and education</i>	<i>All groups</i>
ANNUAL AVERAGE (1989–90 = 100)									
1992–93	109.3	107.0	94.3	107.6	115.0	131.2	134.9	110.7	111.2
1993–94	111.7	106.6	92.1	108.0	117.8	141.5	142.7	113.7	113.4
1994–95	115.1	104.9	97.8	109.2	120.2	148.9	151.3	116.3	116.9
1995–96	118.2	105.1	103.6	112.1	124.5	160.1	158.9	118.0	121.2
1996–97	120.8	105.5	98.9	113.4	124.6	165.3	165.4	121.1	122.3
1997–98	122.7	105.7	90.7	113.7	122.1	169.3	165.4	124.7	121.6
PERCENTAGE CHANGE FROM PREVIOUS YEAR, ANNUAL AVERAGE									
1992–93	3.1	1.6	-6.1	0.1	4.1	10.6	5.6	2.8	2.1
1993–94	2.2	-0.4	-2.3	0.4	2.4	7.9	5.8	2.7	2.0
1994–95	3.0	-1.6	6.2	1.1	2.0	5.2	6.0	2.2	3.1
1995–96	2.7	0.2	5.9	2.7	3.6	7.6	5.0	1.5	3.7
1996–97	2.2	0.3	-4.5	1.2	0.0	3.3	4.1	2.6	0.9
1997–98	1.6	0.2	-8.3	0.2	-1.9	2.4	0.0	3.0	-0.6
QUARTERLY (1989–90 = 100.0)									
1996–97									
March	121.2	105.1	97.5	113.3	125.6	165.2	167.7	122.3	122.6
June	121.9	105.2	94.1	113.6	122.7	166.5	168.0	122.9	121.9
1997–98									
September	122.0	105.4	92.2	113.6	123.2	167.2	158.6	123.7	121.2
December	122.0	106.2	90.2	113.6	122.3	168.8	164.1	123.6	121.2
March	122.9	105.1	89.9	113.7	121.2	170.7	167.8	125.5	121.7
June	123.7	105.9	90.3	113.9	121.8	170.5	171.1	126.1	122.4
PERCENTAGE CHANGE FROM SAME QUARTER OF PREVIOUS YEAR									
1996–97									
March	2.5	0.2	-6.2	0.8	1.4	1.8	4.2	2.9	0.8
June	3.0	-0.3	-9.4	1.2	-2.1	1.8	4.6	3.1	-0.1
1997–98									
September	2.3	-0.1	-10.9	0.5	-1.0	1.5	-1.4	3.8	-0.8
December	1.1	0.2	-10.2	-0.2	-2.5	2.4	-0.5	3.2	-1.1
March	1.4	0.0	-7.8	0.4	-3.5	3.3	0.1	2.6	-0.7
June	1.5	0.7	-4.0	0.3	-0.7	2.4	1.8	2.6	0.4
PERCENTAGE CHANGE FROM PREVIOUS QUARTER									
1996–97									
March	0.4	-0.8	-3.0	-0.4	0.1	0.2	1.7	2.1	0.0
June	0.6	0.1	-3.5	0.3	-2.3	0.8	0.2	0.5	-0.6
1997–98									
September	0.1	0.2	-2.0	0.0	0.4	0.4	-5.6	0.7	-0.6
December	0.0	0.8	-2.2	0.0	-0.7	1.0	3.5	-0.1	0.0
March	0.7	-1.0	-0.3	0.1	-0.9	1.1	2.3	1.5	0.4
June	0.7	0.8	0.4	0.2	0.5	-0.1	2.0	0.5	0.6

		QUARTER.....				
		June	Sep	Dec	Mar	June
		1997	1997	1997	1998	1998
Item	Unit	cents	cents	cents	cents	cents
Milk, carton, supermarket sales	1 L	122	122	124	127	127
Cheese, processed, sliced, wrapped	500 g	320	323	322	323	312
Butter	500 g	161	164	167	175	172
Bread, white loaf, sliced, supermarket sales	680 g	160	161	163	165	162
Self-raising flour	2 kg	235	239	236	235	227
Beef						
Rump steak	1 kg	1 141	1 135	1 098	1 197	1 125
Corned silverside	1 kg	602	626	590	596	608
Lamb						
Leg	1 kg	574	565	535	534	569
Loin chops	1 kg	792	794	796	794	800
Forequarter chops	1 kg	547	534	575	577	573
Pork						
Leg	1 kg	574	622	618	601	544
Loin chops	1 kg	792	802	788	812	803
Chicken, frozen	1 kg	370	362	351	362	357
Bacon, middle rashers	250 g pkt	295	321	295	322	302
Sausages	1 kg	360	360	351	357	352
Potatoes	1 kg	108	111	104	69	76
Onions	1 kg	114	127	165	122	111
Peaches, canned	825 g	185	188	185	193	180
Eggs, 55g	doz.	246	239	235	238	234
Sugar, white	2 kg	182	185	183	201	206
Tea	250 g	175	182	183	217	221
Coffee, instant, jar	150 g	539	573	592	588	586
Margarine, polyunsaturated	500 g	133	144	142	141	147
Petrol						
Leaded	1 L	75.4	74.5	75.0	71.5	73.1
Unleaded	1 L	73.0	72.2	72.6	72.0	71.0

NET MIGRATION.....

<i>Period</i>	<i>Live births(a)</i>	<i>Deaths(a)</i>	<i>Natural increase</i>	<i>Interstate</i>	<i>Overseas(b)</i>	<i>Total increase</i>	<i>Population at end of period(c)</i>
ANNUAL							
1991-92	19 530	11 035	8 532	- 133	2 897	11 296	1 456 523
1992-93	19 686	11 163	8 403	-4 650	1 546	5 299	1 460 730
1993-94	20 036	11 743	7 949	-3 466	1 994	6 477	1 466 127
1994-95	19 569	11 501	7 902	-6 529	2 883	4 256	1 469 411
1995-96	18 959	11 294	7 645	-6 238	4 119	5 526	1 474 253
1996-97	18 945	11 683	7 258	-5 185	3 480	5 553	1 479 806
MONTHLY/QUARTERLY							
1996-97							
September	1 464	977	1 575	-1 746	902	731	1 474 984
October	1 779	1 196
November	1 536	835
December	1 424	920	1 780	-1 565	1 003	1 218	1 476 202
January	1 582	911
February	1 498	827
March	1 301	758	1 880	-1 368	1 228	1 740	1 477 942
April	1 673	935
May	1 805	1 080
June	1 492	959	2 023	-506	347	1 864	1 479 806
1997-98							
July	1 624	1 099
August	1 448	1 066
September	1 481	1 068	1 322	-654	1 124	1 792	1 481 598
October	1 581	1 116
November	1 460	877
December	1 459	960	1 544	-871	598	1 271	1 482 869

(a) Registrations.

(b) Includes category jumping.

Period	EMPLOYED FULL-TIME.....		EMPLOYED PART-TIME.....		TOTAL EMPLOYED.....		UNEMPLOYED..		LABOUR FORCE.....	
	Males	Females	Males	Females	Males	Females	Males	Females	Males	Females
ANNUAL AVERAGE ('000)										
1992-93	322.2	143.2	39.2	126.8	361.4	270.0	51.9	29.9	413.3	299.9
1993-94	322.0	146.3	40.0	127.0	362.0	273.3	47.3	29.9	409.3	303.2
1994-95	323.1	151.5	42.6	131.3	365.7	282.8	44.6	28.7	410.3	311.5
1995-96	325.2	150.0	45.5	136.7	370.7	286.7	42.6	26.0	413.2	312.7
1996-97	320.8	150.5	48.6	140.7	369.4	291.2	42.1	27.5	411.5	318.7
1997-98	321.9	146.3	49.0	136.3	370.9	282.8	42.5	28.8	413.5	311.4
MONTHLY, ORIGINAL ('000)										
1997-98										
July	325.9	149.3	47.5	140.1	373.4	289.4	40.9	27.0	414.3	316.5
August	323.3	143.1	50.0	142.9	373.3	290.4	42.1	25.6	415.3	311.6
September	325.0	144.7	50.4	145.2	375.3	286.1	44.5	27.7	419.9	317.5
October	324.1	145.2	49.6	143.6	373.7	289.9	43.2	26.6	416.9	315.4
November	324.0	147.8	49.2	142.4	373.2	290.3	42.5	26.7	415.8	317.0
December	329.8	151.7	47.1	135.8	376.9	287.5	42.8	28.3	419.7	315.8
January	325.1	147.6	43.3	127.3	368.4	274.9	46.1	32.8	414.5	307.7
February	318.2	148.2	50.0	132.1	368.2	280.2	45.8	31.1	414.0	311.3
March	317.2	148.7	50.4	129.6	367.6	278.2	41.7	31.9	409.3	310.2
April	317.4	145.6	52.2	133.3	369.7	278.9	39.1	28.6	408.8	307.5
May	314.6	142.9	48.7	132.0	363.3	274.9	42.5	29.9	405.8	304.8
June	318.5	141.1	49.9	131.4	368.3	272.5	39.0	29.1	407.3	301.6
1998-99										
July	322.1	145.5	44.7	127.8	366.8	273.2	42.6	26.6	409.4	299.8
MONTHLY, TREND ('000)										
1997-98										
July	324.1	148.3	49.8	140.1	373.9	288.4	43.4	27.7	417.3	316.1
August	324.6	147.1	49.9	141.2	374.5	288.3	43.4	27.8	417.9	316.1
September	324.8	146.2	49.9	142.1	374.7	288.3	43.4	27.8	418.1	316.1
October	324.7	145.8	49.5	142.3	374.2	288.1	43.4	27.9	417.6	316.0
November	324.2	146.1	48.9	141.1	373.1	287.2	43.4	28.0	416.5	315.2
December	323.4	146.9	48.4	138.9	371.8	285.8	43.2	28.3	415.0	314.1
January	322.3	147.6	48.1	136.3	370.4	283.9	42.8	28.7	413.2	312.6
February	321.0	147.7	48.2	133.8	369.2	281.5	42.2	29.1	411.4	310.6
March	319.8	147.2	48.4	131.8	368.2	279.0	41.8	29.4	410.0	308.4
April	318.8	146.3	48.7	130.3	367.5	276.6	41.6	29.6	409.1	306.2
May	318.3	145.3	48.7	129.1	367.0	274.4	41.7	29.7	408.7	304.1
June	318.2	144.5	48.5	127.9	366.7	272.4	42.0	29.7	408.7	302.1
1998-99										
July	318.3	143.8	48.3	126.9	366.6	270.7	42.4	29.5	409.0	300.2
PERCENTAGE CHANGE FROM PREVIOUS MONTH, TREND										
1997-98										
July	0.2	-0.7	0.2	0.3	0.2	-0.2	0.0	0.4	0.2	-0.2
August	0.2	-0.8	0.2	0.8	0.2	0.0	0.0	0.4	0.1	0.0
September	0.1	-0.6	0.0	0.6	0.1	0.0	0.0	0.0	0.0	0.0
October	0.0	-0.3	-0.8	0.1	-0.1	-0.1	0.0	0.4	-0.1	0.0
November	-0.2	0.2	-1.2	-0.8	-0.3	-0.3	0.0	0.4	-0.3	-0.3
December	-0.2	0.5	-0.8	-1.6	-0.3	-0.5	-0.5	1.1	-0.3	-0.4
January	-0.3	0.5	-0.6	-1.9	-0.3	-0.7	-0.7	1.4	-0.4	-0.5
February	-0.4	0.1	0.0	-1.8	-0.4	-0.8	-1.2	1.0	-0.4	-0.7
March	-0.4	-0.4	0.6	-1.4	-0.3	-0.9	-1.2	1.4	-0.4	-0.7
April	-0.3	-0.6	0.6	-1.1	-0.2	-0.9	-0.5	0.7	-0.2	-0.7
May	-0.2	-0.7	0.0	-0.9	-0.1	-0.8	0.2	0.3	-0.1	-0.7
June	0.0	-0.6	-0.4	-0.9	-0.1	-0.7	0.7	0.0	0.0	-0.7
1998-99										
July	0.0	-0.5	-0.4	-0.8	0.0	-0.6	1.0	-0.7	0.1	-0.6

(a) Population aged 15 and over.

Period	CIVILIAN POPULATION....		UNEMPLOYMENT RATE.....				PARTICIPATION RATE..		
	Males aged 15 and over	Females aged 15 and over	Persons aged 15-19	Males all ages	Females all ages	Persons all ages	Males	Females	Persons
	'000	'000	%	%	%	%	%	%	%
ANNUAL AVERAGE									
1992-93	567.4	588.9	26.6	12.6	10.0	11.5	72.8	51.0	61.7
1993-94	570.6	592.0	28.3	11.5	9.8	10.8	71.7	51.2	61.3
1994-95	573.7	594.7	25.2	10.9	9.2	10.2	71.5	52.4	61.8
1995-96	576.2	597.1	27.2	10.3	8.3	9.5	71.7	52.4	61.9
1996-97	579.8	600.6	23.7	10.2	8.6	9.5	71.0	53.1	61.9
1997-98	583.9	604.5	23.2	10.3	9.2	9.8	70.8	51.5	61.0
PERCENTAGE CHANGE FROM PREVIOUS YEAR									
1992-93	0.6	0.6
1993-94	0.6	0.6
1994-95	0.6	0.5
1995-96	0.4	0.5
1996-97	0.6	0.4
1997-98	0.7	0.6
MONTHLY, ORIGINAL									
1996-97									
April	580.8	601.5	26.7	10.6	8.6	9.7	71.1	53.0	61.9
May	581.1	601.8	23.7	10.6	8.2	9.6	71.2	52.4	61.6
June	581.5	602.2	24.3	10.0	8.4	9.3	71.4	53.1	62.1
1997-98									
July	581.9	602.6	21.6	9.9	8.5	9.3	71.2	52.5	61.7
August	582.3	602.9	21.2	10.1	8.2	9.3	71.3	51.7	61.3
September	582.7	603.3	23.2	10.6	8.7	9.8	72.1	52.6	62.2
October	583.1	603.7	22.5	10.4	8.4	9.5	71.5	52.2	61.7
November	583.6	604.1	20.9	10.2	8.4	9.5	71.3	52.5	61.7
December	584.0	604.5	23.3	10.2	8.9	9.7	71.9	52.2	61.9
January	584.3	604.8	26.5	11.1	10.7	10.9	70.9	50.9	60.7
February	584.5	605.1	24.8	11.1	10.0	10.6	70.8	51.5	61.0
March	584.8	605.3	26.1	10.2	10.3	10.2	70.0	51.2	60.5
April	585.1	605.6	23.0	9.6	9.3	9.4	69.9	50.8	60.2
May	585.4	605.9	24.8	10.5	9.8	10.2	69.3	50.3	59.7
June	585.6	606.2	19.9	9.6	9.7	9.6	69.6	49.8	59.5
1997-98									
July	585.9	606.5	23.0	10.4	8.9	9.8	69.9	49.4	59.5
MONTHLY, TREND									
1996-97									
April	n.a.	n.a.	n.a.	10.4	8.6	9.6	71.3	53.0	62.0
May	n.a.	n.a.	n.a.	10.4	8.7	9.7	71.4	52.8	62.0
June	n.a.	n.a.	n.a.	10.4	8.7	9.7	71.6	52.6	61.9
1997-98									
July	n.a.	n.a.	n.a.	10.4	8.8	9.7	71.7	52.5	61.9
August	n.a.	n.a.	n.a.	10.4	8.8	9.7	71.8	52.4	61.9
September	n.a.	n.a.	n.a.	10.4	8.8	9.7	71.7	52.4	61.9
October	n.a.	n.a.	n.a.	10.4	8.8	9.7	71.6	52.3	61.8
November	n.a.	n.a.	n.a.	10.4	8.9	9.8	71.4	52.2	61.6
December	n.a.	n.a.	n.a.	10.4	9.0	9.8	71.1	52.0	61.4
January	n.a.	n.a.	n.a.	10.4	9.2	9.8	70.7	51.7	61.0
February	n.a.	n.a.	n.a.	10.3	9.4	9.9	70.4	51.3	60.7
March	n.a.	n.a.	n.a.	10.2	9.5	9.9	70.1	51.0	60.4
April	n.a.	n.a.	n.a.	10.2	9.7	10.0	69.9	50.6	60.1
May	n.a.	n.a.	n.a.	10.2	9.8	10.0	69.8	50.2	59.8
June	n.a.	n.a.	n.a.	10.3	9.8	10.1	69.8	49.8	59.6
1997-98									
July	n.a.	n.a.	n.a.	10.4	9.8	10.1	69.8	49.5	59.5

(a) Population aged 15 and over.

Period	FULL-TIME ADULTS ORDINARY TIME EARNINGS			FULL-TIME ADULTS TOTAL EARNINGS.....			ALL EMPLOYEES TOTAL EARNINGS.....		
	Males	Females	Persons	Males	Females	Persons	Males	Females	Persons
ANNUAL AVERAGE (\$ per week)									
1992-93	610.10	534.90	585.40	646.40	546.80	613.70	560.00	382.60	477.40
1993-94	625.10	547.60	600.00	667.50	560.10	632.70	595.10	396.60	503.30
1994-95	632.70	559.10	608.20	681.70	572.50	645.30	599.90	411.90	513.40
1995-96	653.80	555.90	622.80	703.20	568.50	660.10	620.10	403.90	520.70
1996-97	678.20	575.10	644.30	735.10	589.40	687.20	636.90	408.70	529.80
1997-98	705.60	606.05	670.53	755.05	619.33	707.20	646.28	438.50	545.70
PERCENTAGE CHANGE FROM PREVIOUS YEAR									
1992-93	3.7	2.1	3.1	3.4	2.4	3.0	-0.8	-1.1	-1.3
1993-94	2.5	2.4	2.5	3.3	2.4	3.1	6.3	3.7	5.4
1994-95	1.2	2.1	1.4	2.1	2.2	2.0	0.8	3.9	2.0
1995-96	3.3	-0.6	2.4	3.1	-0.7	2.3	3.4	-1.9	1.4
1996-97	3.7	3.5	3.5	4.5	3.7	4.1	2.7	1.2	1.8
1997-98	4.0	5.4	4.1	2.7	5.1	2.9	1.5	7.3	3.0
QUARTERLY (\$ per week)									
1996-97									
15 November	669.60	575.30	639.50	728.30	591.80	684.80	626.80	402.30	522.20
21 February	685.60	578.20	649.70	741.90	594.00	692.40	639.80	409.50	530.80
16 May	690.90	584.50	655.70	750.00	597.20	699.30	652.30	419.50	542.50
1997-98									
15 August	703.90	583.70	663.40	756.20	593.50	701.40	651.00	420.00	542.50
21 November	689.70	594.20	655.00	739.90	607.40	691.80	631.70	433.90	533.90
20 February	715.10	626.20	683.60	764.60	642.10	721.20	656.10	447.70	553.60
15 May	713.80	620.10	680.10	759.50	634.30	714.40	646.30	452.40	552.80
PERCENTAGE CHANGE FROM CORRESPONDING REFERENCE DATE IN PREVIOUS YEAR									
1996-97									
15 November	3.4	4.8	3.8	5.1	5.5	5.2	3.2	1.5	2.3
21 February	4.1	3.8	3.7	4.0	4.3	3.8	1.3	1.8	0.7
16 May	3.3	4.9	3.5	4.0	4.4	3.7	1.8	2.7	1.5
1997-98									
15 August	5.6	3.8	4.9	5.0	3.3	4.3	3.6	4.1	3.6
21 November	3.0	3.3	2.4	1.6	2.6	1.0	0.8	7.9	2.2
20 February	4.3	8.3	5.2	3.1	8.1	4.2	2.5	9.3	4.3
15 May	3.3	6.1	3.7	1.3	6.2	2.2	-0.9	7.8	1.9
PERCENTAGE CHANGE FROM PREVIOUS REFERENCE DATE									
1996-97									
15 November	0.4	2.3	1.1	1.1	3.0	1.9	-0.3	-0.3	-0.3
21 February	2.4	0.5	1.6	1.9	0.4	1.1	2.1	1.8	1.6
16 May	0.8	1.1	0.9	1.1	0.5	1.0	2.0	2.4	2.2
1997-98									
15 August	1.9	-0.1	1.2	0.8	-0.6	0.3	-0.2	0.1	0.0
21 November	-2.0	1.8	-1.3	-2.2	2.3	-1.4	-3.0	3.3	-1.6
20 February	3.7	5.4	4.4	3.3	5.7	4.2	3.9	3.2	3.7
15 May	-0.2	-1.0	-0.5	-0.7	-1.2	-0.9	-1.5	1.0	-0.1

SECURED HOUSING
FINANCE
COMMITMENTS.....

Period	Dwelling units	Value	Alterations and additions	Personal finance commitments	Commercial finance commitments	Lease finance commitments
	no.	\$m	\$m	\$m	\$m	\$m
ANNUAL						
1992-93	36 960	2 569.5	102.8	1 656.9	5 122.5	249.5
1993-94	45 725	3 387.9	221.8	1 840.3	5 467.2	250.6
1994-95	36 429	2 879.7	242.2	2 152.2	5 405.6	271.4
1995-96	38 707	2 982.2	240.7	2 215.5	6 516.2	265.7
1996-97	36 661	2 956.1	188.1	2 469.2	6 092.4	232.0
1997-98	37 379	3 129.7	139.5	2 763.9	6 486.4	267.3

PERCENTAGE CHANGE FROM PREVIOUS YEAR

1992-93	16.4	23.3	15.8	13.7	-23.2	-2.6
1993-94	23.7	31.9	115.7	11.1	6.7	0.5
1994-95	-20.3	-15.0	9.2	16.9	-1.1	8.3
1995-96	6.3	3.6	-0.6	2.9	20.5	-2.1
1996-97	-5.3	-0.9	-21.9	11.5	-6.5	-12.7
1997-98	-2.0	5.9	-25.8	11.9	6.5	15.2

MONTHLY

1996-97						
April	3 318	270.4	15.5	226.9	487.5	21.6
May	3 228	264.5	14.8	225.2	561.6	20.7
June	3 172	253.3	11.9	249.8	497.9	30.6
1997-98						
July	3 004	243.4	10.8	278.3	640.6	29.8
August	3 085	251.1	10.4	204.6	377.8	21.8
September	3 039	253.3	9.9	220.1	557.5	21.7
October	3 173	267.7	13.3	221.1	619.2	21.6
November	3 033	257.8	11.5	219.7	452.4	17.8
December	3 212	275.3	10.1	233.3	831.4	20.0
January	2 515	207.1	8.6	196.5	378.8	15.3
February	3 107	254.1	10.3	209.4	409.2	18.6
March	3 349	282.8	15.8	250.9	518.2	24.2
April	3 227	271.5	12.7	227.6	466.3	16.1
May	3 054	259.8	12.1	235.6	456.3	23.0
June	3 581	307.0	14.0	266.8	778.7	37.5

PERCENTAGE CHANGE FROM PREVIOUS MONTH

1996-97						
February	-3.7	6.6	7.0	-4.0	1.5	11.5
March	3.5	2.0	-21.3	11.8	26.8	-8.7
April	6.4	7.5	19.6	-0.2	-7.4	55.3
May	-2.7	-2.2	-4.3	-0.8	15.2	-4.2
June	-1.7	-4.2	-19.8	10.9	-11.3	47.6
1997-98						
July	-5.3	-3.9	-9.0	11.4	28.7	-2.5
August	2.7	3.1	-3.9	-26.5	-41.0	-27.1
September	-1.5	0.9	-4.5	7.6	47.6	-0.4
October	4.4	5.7	33.9	0.4	11.1	-0.4
November	-4.4	-3.7	-13.1	-0.6	-26.9	-17.7
December	5.9	6.8	-12.9	6.2	83.8	12.4
January	-21.7	-24.8	-14.3	-15.8	-54.4	-23.5
February	23.5	22.7	19.4	6.6	8.0	21.6
March	7.8	11.3	53.7	19.9	26.6	30.3
April	-3.6	-4.0	-20.0	-9.3	-10.0	-33.4
May	-5.4	-5.1	-4.7	3.5	-2.1	42.9
June	17.3	19.1	16.1	13.3	70.7	62.7

PUBLICATIONS SOURCE INDEX

- (1) *Australian National Accounts, Quarterly State Details* (Cat. no. 5206.0.40.001)
- (2) *International Merchandise Trade, Australia* (Cat. no. 5422.0) Quarterly
- (3) *Retail Trade, Australia* (Cat. no. 8501.0) Monthly
- (4) *New Motor Vehicles Registrations, Australia, Preliminary* (Cat. no. 9301.0)
Monthly
- (5) *State Estimates of Private New Capital Expenditure* (Cat. no. 5646.0) Quarterly
- (6) *Tourist Accommodation, Australia* (Cat. no. 8635.0) Quarterly
- (7) *Building Approvals, Australia* (Cat. no. 8731.0) Monthly
- (8) *Building Activity, Australia* (Cat. no. 8752.0) Quarterly
- (8a) *Building Activity, Australia, Dwelling Unit Commencements, Preliminary* (Cat. no. 8750.0) Quarterly
- (9) *Engineering Construction Activity, Australia* (Cat. no. 8762.0) Quarterly
- (10) *Manufacturing Production, Australia, Preliminary* (Cat. no. 8301.0)
Monthly
- (11) *Livestock Products, Australia* (Cat. no. 7215.0) Monthly
- (12) *Actual and Expected Private Mineral Exploration, Australia* (Cat. no. 8412.0)
Quarterly
- (13) *Consumer Price Index* (Cat. no. 6401.0) Quarterly
- (14) *Price Index of Materials Used in House Building, Six State Capital Cities and Canberra* (Cat. no. 6408.0) Monthly
- (15) *Price Index of Materials Used in Building Other Than House Building, Six State Capital Cities and Canberra* (Cat. no. 6407.0) Monthly
- (16) *House Price Indexes: Eight Capital Cities* (Cat. no. 6416.0) Quarterly
- (17) *Australian Demographic Statistics* (Cat. no. 3101.0) Quarterly
- (18) *Labour Force, Australia, Preliminary* (Cat. no. 6202.0) Monthly
- (19) *Job Vacancies and Overtime, Australia* (Cat. no. 6354.0) Quarterly
- (20) *Industrial Disputes, Australia* (Cat. no. 6321.0) Monthly
- (21) Unpublished overseas arrival and departure statistics on microfiche
- (22) *Average Weekly Earnings, States and Australia* (Cat. no. 6302.0) Quarterly
- (23) *Wage Cost Index, Australia* (Cat. no. 6345.0) Quarterly
- (24) *Housing Finance for Owner Occupation, Australia* (Cat. no. 5609.0) Monthly
- (25) Unpublished statistics available from PC AUSSTATS
- (26) *Reserve Bank of Australia Bulletin*

SELF-HELP ACCESS TO STATISTICS

PHONE Call 1900 986 400 for the latest statistics on CPI, Labour Force, Earnings, National Accounts, Balance of Payments and other topics. (Call cost is 75c per minute)

INTERNET <http://www.abs.gov.au>

LIBRARY A range of ABS publications is available from public and tertiary libraries Australia wide. Contact your nearest library to determine whether it has the ABS statistics you require.

WHY NOT SUBSCRIBE?

PHONE +61 1300 366 323

FAX +61 3 9615 7848

CONTACTING THE ABS

ABS provides a range of services, including: a telephone inquiry service; information consultancy tailored to your needs; survey, sample and questionnaire design; survey evaluation and methodological reviews; and statistical training.

<i>INQUIRIES</i>	<i>By phone</i>	<i>By fax</i>
Canberra	02 6252 6627	02 6253 1404
Sydney	02 9268 4611	02 9268 4668
Melbourne	03 9615 7755	03 9615 7798
Brisbane	07 3222 6351	07 3222 6283
Perth	08 9360 5140	08 9360 5955
Adelaide	08 8237 7400	08 8237 7566
Hobart	03 6222 5800	03 6222 5995
Darwin	08 8943 2111	08 8981 1218

POST Client Services, ABS, PO Box 10, Belconnen, ACT 2616

EMAIL client.services@abs.gov.au



2130740009983
ISSN 1039-8880

RRP \$19.50